

PDE3A (Phospho Ser312) Rabbit pAb

CatalogNo: YP1737

Key Features

Host Species

- Rabbit

Reactivity

- Human, Mouse, Rat

Applications

- WB

MW

- 126kD (Calculated)

Isotype

- IgG

Storage

Storage* -15°C to -25°C/1 year (Do not lower than -25°C)

Formulation Liquid in PBS containing 50% glycerol, 0.5% BSA and 0.02% sodium azide.

Recommended Dilution Ratios

WB 1:500-2000

Basic Information

Clonality Polyclonal

Immunogen Information

Immunogen Synthesized peptide derived from human PDE3A (Phospho-Ser312)

Specificity This antibody detects endogenous levels of PDE3A (Phospho-Ser312) at Human, Mouse, Rat. The name of modified sites may be influenced by many factors, such as species (the modified site was not originally found in human samples) and the change of protein sequence (the previous protein sequence is incomplete, and the protein sequence may be prolonged with the development of protein sequencing technology). When naming, we will use the "numbers" in historical reference to keep the sites consistent with the reports. The antibody binds to the following modification sequence (lowercase letters are modification sites): RTsLP

Target Information

Gene name PDE3A

Protein Name cGMP-inhibited 3',5'-cyclic phosphodiesterase 3A

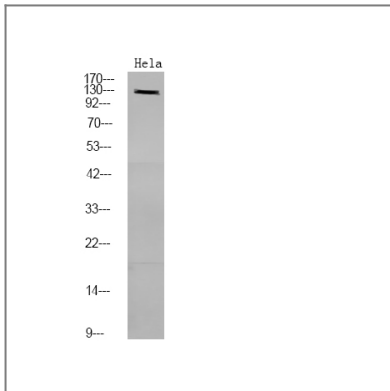
| Organism | Gene ID | UniProt ID |
|----------|------------------------|-------------------------|
| Human | 5139; | Q14432; |
| Mouse | 54611; | Q9Z0X4; |
| Rat | 50678; | Q62865; |

Cellular Localization Membrane ; Multi-pass membrane protein . Cytoplasm, cytosol .

Tissue specificity Blood,Epithelium,Liver,Myocardium,Penis,Platelet,

Function Catalytic activity:Nucleoside 3',5'-cyclic phosphate + H(2)O = nucleoside 5'-phosphate.,enzyme regulation:Inhibited by cGMP.,Function:Hydrolyzes both cyclic AMP (cAMP) and cyclic GMP (cGMP).,online information:PDE3 entry,similarity:Belongs to the cyclic nucleotide phosphodiesterase family.,

Validation Data



Western Blot analysis of HeLa using primary antibody at 1:1000 dilution 4°C, overnight. Secondary antibody(catalog#:RS23920) was diluted at 1:10000 25°C, 1.5hours

Contact information

Orders: order@immunoway.com
Support: tech@immunoway.com
Telephone: 877-594-3616 (Toll Free), 408-747-0185
Website: <http://www.immunoway.com>
Address: 2200 Ringwood Ave San Jose, CA 95131 USA



Please scan the QR code to access additional product information:
PDE3A (Phospho Ser312) Rabbit pAb

