

NUAK1 (Phospho Ser600) Rabbit pAb

CatalogNo: YP1730

Key Features

Host Species

- Rabbit

Reactivity

- Human, Mouse, Rat

Applications

- WB

MW

- 73kD (Calculated)

Isotype

- IgG

Storage

Storage* -15°C to -25°C/1 year (Do not lower than -25°C)

Formulation Liquid in PBS containing 50% glycerol, 0.5% BSA and 0.02% sodium azide.

Recommended Dilution Ratios

WB 1:500-2000

Basic Information

Clonality Polyclonal

Immunogen Information

Immunogen Synthesized peptide derived from human NuaK1 (Phospho-Ser600)

Specificity This antibody detects endogenous levels of NuaK1 (Phospho-Ser600) at Human, Mouse, Rat. The name of modified sites may be influenced by many factors, such as species (the modified site was not originally found in human samples) and the change of protein sequence (the previous protein sequence is incomplete, and the protein sequence may be prolonged with the development of protein sequencing technology). When naming, we will use the "numbers" in historical reference to keep the sites consistent with the reports. The antibody binds to the following modification sequence (lowercase letters are modification sites): IRsCV

Target Information

Gene name NUA1 ARK5 KIAA0537 OMPHK1

Protein Name NuaK1 (Phospho-Ser600)

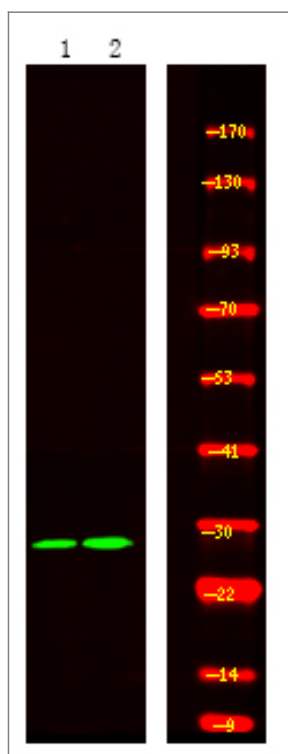
Organism	Gene ID	UniProt ID
Human	9891 ;	O60285 ;
Mouse	77976 ;	Q641K5 ;

Cellular Localization Nucleus . Cytoplasm .

Tissue specificity Expressed at high levels in heart and brain, and at lower levels in skeletal muscle, kidney, ovary, placenta, lung and liver. Highly up-regulated in colorectal cancer cell lines.

Function Catalytic activity:ATP + a protein = ADP + a phosphoprotein.,cofactor:Magnesium.,enzyme regulation:Activated by PKB/AKT1 during glucose starvation. Activated by phosphorylation on Thr-211 by STK11 in complex with STE20-related adapter-alpha (STRAD alpha) pseudo kinase and CAB39.,Function:Involved in tolerance to glucose starvation. Phosphorylates ATM. Suppresses Fas-induced apoptosis by phosphorylation of CASP6, thus suppressing the activation of the caspase and the subsequent cleavage of CFLAR.,similarity:Belongs to the protein kinase superfamily.,similarity:Belongs to the protein kinase superfamily. CAMK Ser/Thr protein kinase family. SNF1 subfamily.,similarity:Contains 1 protein kinase domain.,tissue specificity:Expressed at high levels in heart and brain, and at lower levels in skeletal muscle, kidney, ovary, placenta, lung and liver.,

Validation Data



Western Blot analysis of mouse brainrat-brain ,using primary antibody at 1:1000 dilution. Secondary antibody(catalog#:RS23920) was diluted at 1:10000

| Contact information

Orders: order@immunoway.com
Support: tech@immunoway.com
Telephone: 877-594-3616 (Toll Free), 408-747-0185
Website: <http://www.immunoway.com>
Address: 2200 Ringwood Ave San Jose, CA 95131 USA



Please scan the QR code to access additional product information:
NUAK1 (Phospho Ser600) Rabbit pAb

For Research Use Only. Not for Use in Diagnostic Procedures.

[Antibody](#) | [ELISA Kits](#) | [Protein](#) | [Reagents](#)