

# XRCC4 (Phospho Ser260) Rabbit pAb

CatalogNo: YP1724 Orthogonal Validated 

## Key Features

### Host Species

- Rabbit

### Reactivity

- Human, Mouse, Rat

### Applications

- WB

### MW

- 35kD (Observed)

### Isotype

- IgG

## Storage

**Storage\*** -15°C to -25°C/1 year (Do not lower than -25°C)

**Formulation** Liquid in PBS containing 50% glycerol, 0.5% BSA and 0.02% sodium azide.

## Recommended Dilution Ratios

**WB 1:500-2000**

## Basic Information

**Clonality** Polyclonal

## Immunogen Information

**Immunogen** Synthesized peptide derived from human XRCC4 (Phospho-Ser260)

**Specificity** This antibody detects endogenous levels of XRCC4 (Phospho-Ser260) at Human, Mouse, Rat. The name of modified sites may be influenced by many factors, such as species (the modified site was not originally found in human samples) and the change of protein sequence (the previous protein sequence is incomplete, and the protein sequence may be prolonged with the development of protein sequencing technology). When naming, we will use the "numbers" in historical reference to keep the sites consistent with the reports. The antibody binds to the following modification sequence (lowercase letters are modification sites): ISsLD

---

## | Target Information

**Gene name** XRCC4

**Protein Name** XRCC4 (Phospho-Ser260)

Organism	Gene ID	UniProt ID
Human	<a href="#">7518</a> ;	<a href="#">Q13426</a> ;
Mouse	<a href="#">108138</a> ;	<a href="#">Q924T3</a> ;

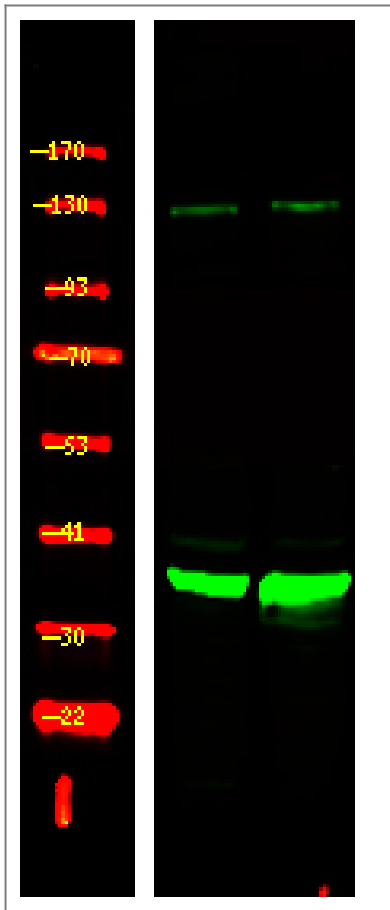
**Cellular Localization** Nucleus . Chromosome . Localizes to site of double-strand breaks. . ; [Protein XRCC4, C-terminus]: Cytoplasm . Translocates from the nucleus to the cytoplasm following cleavage by caspase-3 (CASP3). .

**Tissue specificity** Widely expressed.

**Function** Function:Involved in DNA non-homologous end joining (NHEJ) required for double-strand break repair and V(D)J recombination. Binds to DNA and to DNA ligase IV (LIG4). The LIG4-XRCC4 complex is responsible for the NHEJ ligation step, and XRCC4 enhances the joining activity of LIG4. Binding of the LIG4-XRCC4 complex to DNA ends is dependent on the assembly of the DNA-dependent protein kinase complex DNA-PK to these DNA ends.,PTM:Monoubiquitinated.,PTM:Phosphorylated by PRKDC. The phosphorylation seems not to be necessary for binding to DNA. Phosphorylation by CK2 promotes interaction with APTX.,PTM:Sumoylation at Lys-210 is required for nuclear localization and recombination efficiency. Has no effect on ubiquitination.,similarity:Belongs to the XRCC4 family.,subunit:Homodimer and homotetramer in solution. The homodimer associates with LIG4, and the LIG4-XRCC4 complex associates in a DNA-dependent manner with the DNA-PK complex formed by the Ku p70/p86 dimer (G22P1/G22P2) and PRKDC. Seems to interact directly with PRKDC but not with the Ku p70/86 dimer. Interacts with XLF/Cernunnos. Interacts with APTX and APLF.,tissue specificity:Widely expressed.,

---

## | Validation Data



Western Blot analysis of 1 A549 cell 2 LPS 100ng/mL 30min treated ,using primary antibody at 1:1000 dilution. Secondary antibody(catalog#:RS23920) was diluted at 1:10000

## Contact information

Orders: [order@immunoway.com](mailto:order@immunoway.com)  
Support: [tech@immunoway.com](mailto:tech@immunoway.com)  
Telephone: 877-594-3616 (Toll Free), 408-747-0185  
Website: <http://www.immunoway.com>  
Address: 2200 Ringwood Ave San Jose, CA 95131 USA



Please scan the QR code to access additional product information:  
**XRCC4 (Phospho Ser260) Rabbit pAb**

For Research Use Only. Not for Use in Diagnostic Procedures.

[Antibody](#) | [ELISA Kits](#) | [Protein](#) | [Reagents](#)