

Fes (Phospho Tyr713) Rabbit pAb

CatalogNo: YP1721 Orthogonal Validated 

Key Features

Host Species

- Rabbit

Reactivity

- Human, Mouse, Rat

Applications

- WB

MW

- 90kD (Calculated)

Isotype

- IgG

Storage

Storage* -15°C to -25°C/1 year (Do not lower than -25°C)

Formulation Liquid in PBS containing 50% glycerol, 0.5% BSA and 0.02% sodium azide.

Recommended Dilution Ratios

WB 1:500-2000

Basic Information

Clonality Polyclonal

Immunogen Information

Immunogen Synthesized peptide derived from human c-Fes (Phospho-Tyr713)

Specificity This antibody detects endogenous levels of c-Fes (Phospho-Tyr713) at Human, Mouse, Rat. The name of modified sites may be influenced by many factors, such as species (the modified site was not originally found in human samples) and the change of protein sequence (the previous protein sequence is incomplete, and the protein sequence may be prolonged with the development of protein sequencing technology). When naming, we will use the "numbers" in historical reference to keep the sites consistent with the reports. The antibody binds to the following modification sequence (lowercase letters are modification sites):GVyAA

Target Information

Gene name FES FPS

Protein Name Tyrosine-protein kinase Fes/Fps (Phospho-Tyr713)

Organism	Gene ID	UniProt ID
Human	2242 ;	P07332 ;
Mouse	14159 ;	P16879 ;

Cellular Localization

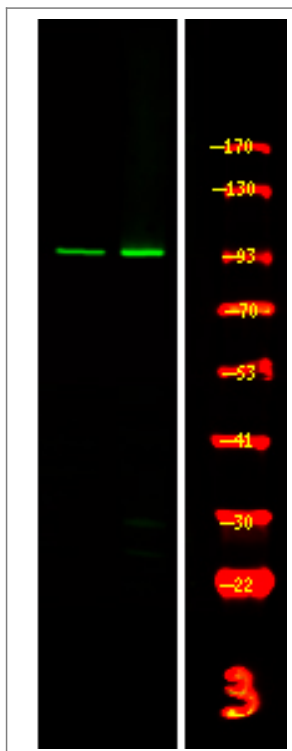
Cytoplasm, cytosol. Cytoplasm, cytoskeleton. Cell membrane; Peripheral membrane protein; Cytoplasmic side. Cytoplasmic vesicle. Golgi apparatus. Cell junction, focal adhesion. Distributed throughout the cytosol when the kinase is not activated. Association with microtubules requires activation of the kinase activity. Shuttles between focal adhesions and cell-cell contacts in epithelial cells. Recruited to the lateral cell membrane in polarized epithelial cells by interaction with phosphorylated EZR. Detected at tubular membrane structures in the cytoplasm and at the cell periphery.

Tissue specificity Widely expressed. Detected in adult colon epithelium (at protein level) (PubMed:16455651, PubMed:19051325). Expressed in melanocytes (at protein level) (PubMed:28463229).

Function

Catalytic activity:ATP + a [protein]-L-tyrosine = ADP + a [protein]-L-tyrosine phosphate.,similarity:Belongs to the protein kinase superfamily. Tyr protein kinase family.,similarity:Belongs to the protein kinase superfamily. Tyr protein kinase family. Fes/fps subfamily.,similarity:Contains 1 FCH domain.,similarity:Contains 1 protein kinase domain.,similarity:Contains 1 SH2 domain.,

Validation Data



Western Blot analysis of 1 HepG2 cell, 2 LPS 100ng/mL 30min treated ,using primary antibody at 1:1000 dilution. Secondary antibody(catalog#:RS23920) was diluted at 1:10000

| Contact information

Orders: order@immunoway.com
Support: tech@immunoway.com
Telephone: 877-594-3616 (Toll Free), 408-747-0185
Website: <http://www.immunoway.com>
Address: 2200 Ringwood Ave San Jose, CA 95131 USA



Please scan the QR code to access additional product information:
Fes (Phospho Tyr713) Rabbit pAb

For Research Use Only. Not for Use in Diagnostic Procedures.

[Antibody](#) | [ELISA Kits](#) | [Protein](#) | [Reagents](#)