

## p38- $\gamma/\delta$ (Phospho Tyr185/182) Rabbit pAb

CatalogNo: YP1718

Orthogonal Validated 

### Key Features

#### Host Species

- Rabbit

#### Reactivity

- Human, Mouse, Rat

#### Applications

- WB

#### MW

- 40kD (Calculated)

#### Isotype

- IgG

### Storage

**Storage\*** -15°C to -25°C/1 year (Do not lower than -25°C)

**Formulation** Liquid in PBS containing 50% glycerol, 0.5% BSA and 0.02% sodium azide.

### Recommended Dilution Ratios

WB 1:500-2000

### Basic Information

**Clonality** Polyclonal

### Immunogen Information

**Immunogen** Synthesized peptide derived from human p38- $\gamma/\delta$  (Phospho-Tyr185/182)

**Specificity** This antibody detects endogenous levels of p38- $\gamma/\delta$  only when phosphorylated at Tyr185 or Thr182, and dually phosphorylated at two sites. The name of modified sites may be influenced by many factors, such as species (the modified site was not originally found in human samples) and the change of protein sequence (the previous protein sequence is incomplete, and the protein sequence may be prolonged with the development of protein sequencing technology). When naming, we will use the "numbers" in historical reference to keep the sites consistent with the reports. The antibody binds to the following modification sequence (lowercase letters are modification sites): TGyVV

---

## | Target Information

**Gene name** MAPK12 ERK6 SAPK3

**Protein Name** p38- $\gamma/\delta$  (Phospho-Tyr185/182)

Organism	Gene ID	UniProt ID
Human	<a href="#">6300</a> ;	<a href="#">P53778</a> ;
Mouse	<a href="#">29857</a> ;	<a href="#">O08911</a> ;
Rat	<a href="#">60352</a> ;	<a href="#">Q63538</a> ;

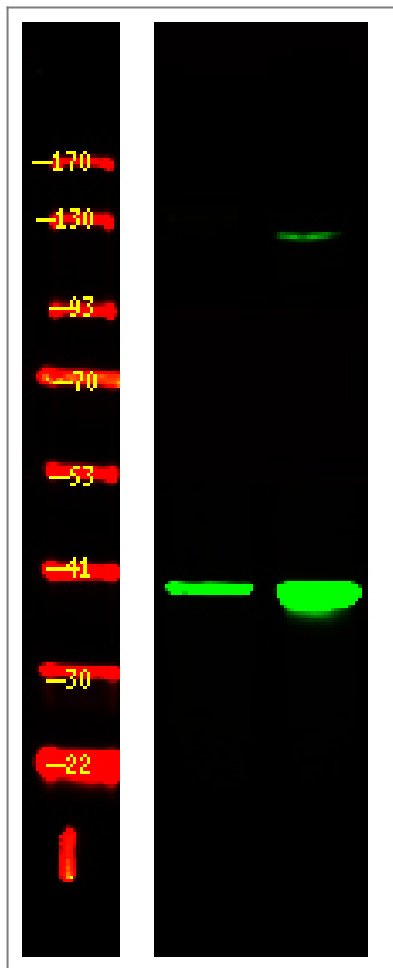
**Cellular Localization** Cytoplasm. Nucleus. Mitochondrion. Mitochondrial when associated with SH3BP5. In skeletal muscle colocalizes with SNTA1 at the neuromuscular junction and throughout the sarcolemma (By similarity). .

**Tissue specificity** Highly expressed in skeletal muscle and heart.

**Function** Catalytic activity:ATP + a protein = ADP + a phosphoprotein.,cofactor:Binds 2 magnesium ions.,Domain:The TXY motif contains the threonine and tyrosine residues whose phosphorylation activates the MAP kinases.,enzyme regulation:Activated by phosphorylation on threonine and tyrosine.,Function:Responds to activation by environmental stress and pro-inflammatory cytokines by phosphorylating downstream targets. Plays a role in myoblast differentiation and also in the down-regulation of cyclin D1 in response to hypoxia in adrenal cells suggesting MAPK12 may inhibit cell proliferation while promoting differentiation.,PTM:Dually phosphorylated on Thr-183 and Tyr-185, which activates the enzyme.,similarity:Belongs to the protein kinase superfamily. CMGC Ser/Thr protein kinase family. MAP kinase subfamily.,similarity:Contains 1 protein kinase domain.,subcellular location:Mitochondrial when associated with SH3BP5.,subunit:Monomer. Interacts with the PDZ domain of the syntrophin SNTA1. Interacts with SH3BP5.,tissue specificity:Highly expressed in skeletal muscle and heart.,

---

## | Validation Data



Western Blot analysis of 1, HeLa cell, 2 LPS 100ng/mL 30min treated ,using primary antibody at 1:1000 dilution. Secondary antibody(catalog#:RS23920) was diluted at 1:10000

## Contact information

Orders: [order@immunoway.com](mailto:order@immunoway.com)  
Support: [tech@immunoway.com](mailto:tech@immunoway.com)  
Telephone: 877-594-3616 (Toll Free), 408-747-0185  
Website: <http://www.immunoway.com>  
Address: 2200 Ringwood Ave San Jose, CA 95131 USA



Please scan the QR code to access additional product information:  
**p38- $\gamma/\delta$  (Phospho Tyr185/182) Rabbit pAb**

For Research Use Only. Not for Use in Diagnostic Procedures.

[Antibody](#) | [ELISA Kits](#) | [Protein](#) | [Reagents](#)