

QIK/QSK (Phospho Thr175/163) Rabbit pAb

CatalogNo: YP1716 Orthogonal Validated 

Key Features

Host Species

- Rabbit

Reactivity

- Human, Mouse, Rat

Applications

- WB

MW

- 86kD (Calculated)

Isotype

- IgG

Storage

Storage* -15°C to -25°C/1 year (Do not lower than -25°C)

Formulation Liquid in PBS containing 50% glycerol, 0.5% BSA and 0.02% sodium azide.

Recommended Dilution Ratios

WB 1:500-2000

Basic Information

Clonality Polyclonal

Immunogen Information

Immunogen Synthesized peptide derived from human QIK/QSK (Phospho-Thr175/163)

Specificity This antibody detects endogenous levels of QIK/QSK only when phosphorylated at Thr175 or 163, and dually phosphorylated at two sites. The name of modified sites may be influenced by many factors, such as species (the modified site was not originally found in human samples) and the change of protein sequence (the previous protein sequence is incomplete, and the protein sequence may be prolonged with the development of protein sequencing technology). When naming, we will use the "numbers" in historical reference to keep the sites consistent with the reports. The antibody binds to the following modification sequence (lowercase letters are modification sites): NFyKS

| Target Information

Gene name SIK1 SIK SNF1LK

Protein Name QIK/QSK (Phospho-Thr175/163)

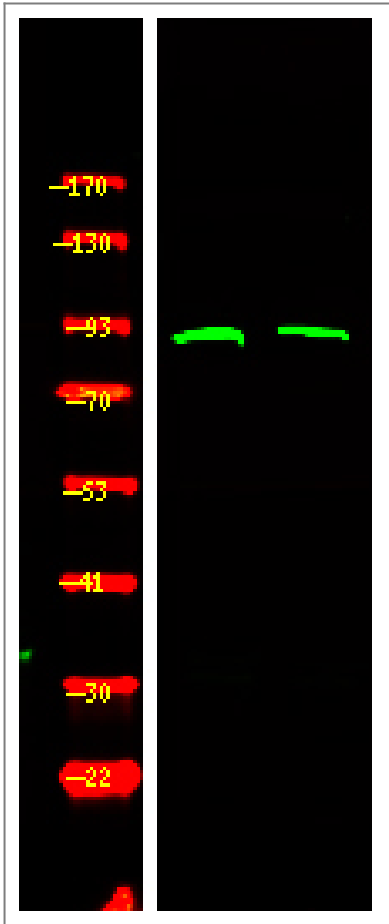
Organism	Gene ID	UniProt ID
Human	150094 ;	P57059 ;
Mouse	17691 ;	Q60670 ;
Rat	59329 ;	Q9R1U5 ;

Cellular Localization Cytoplasm . Nucleus . Locates to cytoplasm when inactive following cAMP-induced phosphorylation, probably by PKA (PubMed:29211348).

Tissue specificity Fetal lung,Spleen,Testis,

Function Catalytic activity:ATP + a protein = ADP + a phosphoprotein.,cofactor:Magnesium.,enzyme regulation:Activated by phosphorylation on Thr-182 by STK11 in complex with STE20-related adapter-alpha (STRAD alpha) pseudo kinase and CAB39.,Function:Transient role during the earliest stages of myocardial cell differentiation and/or primitive chamber formation and may also be important for the earliest stages of skeletal muscle growth and/or differentiation. Potential role in G2/M cell cycle regulation. Inhibits CREB activity by phosphorylating and repressing the CREB-specific coactivators, CRTC1-3.,PTM:Phosphorylated upon DNA damage, probably by ATM or ATR.,similarity:Belongs to the protein kinase superfamily. CAMK Ser/Thr protein kinase family. AMPK subfamily.,similarity:Contains 1 protein kinase domain.,similarity:Contains 1 UBA domain.,subcellular location:Translocates to the cytoplasm on phosphorylation where it binds binding to YWHAZ.,subunit:Binds to and is activated by YWHAZ when phosphorylated on Thr-182.,

| Validation Data



Western Blot analysis of 1 HeLa cell, 2 LPS 100ng/mL 30min treated ,using primary antibody at 1:1000 dilution. Secondary antibody(catalog#:RS23920) was diluted at 1:10000

Contact information

Orders: order@immunoway.com
Support: tech@immunoway.com
Telephone: 877-594-3616 (Toll Free), 408-747-0185
Website: <http://www.immunoway.com>
Address: 2200 Ringwood Ave San Jose, CA 95131 USA



Please scan the QR code to access additional product information:
QIK/QSK (Phospho Thr175/163) Rabbit pAb

For Research Use Only. Not for Use in Diagnostic Procedures.

[Antibody](#) | [ELISA Kits](#) | [Protein](#) | [Reagents](#)