

FGFR1/2/3/4 (Phospho Tyr653/654) Rabbit pAb

CatalogNo: YP1715

Key Features

Host Species

- Rabbit

Reactivity

- Human, Mouse, Rat

Applications

- WB

MW

- 90kD (Calculated)

Isotype

- IgG

Storage

Storage* -15°C to -25°C/1 year (Do not lower than -25°C)

Formulation Liquid in PBS containing 50% glycerol, 0.5% BSA and 0.02% sodium azide.

Recommended Dilution Ratios

WB 1:500-2000

Basic Information

Clonality Polyclonal

Immunogen Information

Immunogen Synthesized peptide derived from human FGFR1/2/3/4 (Phospho-Tyr653+Tyr654)

Specificity This antibody detects endogenous levels of FGFR1/2/3/4 only when phosphorylated at Tyr653/Tyr654. The name of modified sites may be influenced by many factors, such as species (the modified site was not originally found in human samples) and the change of protein sequence (the previous protein sequence is incomplete, and the protein sequence may be prolonged with the development of protein sequencing technology). When naming, we will use the "numbers" in historical reference to keep the sites consistent with the reports. The antibody binds to the following modification sequence (lowercase letters are modification sites): IDyYK

Target Information

Gene name FGFR1/2/3/4

Protein Name Fibroblast growth factor receptor 1/2/3/4 (Phospho-Tyr653+Tyr654)

Organism	Gene ID	UniProt ID
Human	2260 ; 2263 ; 2261 ; 2264 ; ;	P11362 ; P21802 ; P22607 ; P22455 ; ;
Mouse	14182 ; 14183 ; 14184 ; 14186 ; ;	P16092 ; P21803 ; Q61851 ; A0A0R4IZY3 ; ;
Rat	79114 ;	Q04589 ;

Cellular Localization

Cell membrane; Single-pass type I membrane protein. Nucleus. Cytoplasm, cytosol. Cytoplasmic vesicle. After ligand binding, both receptor and ligand are rapidly internalized. Can translocate to the nucleus after internalization, or by translocation from the endoplasmic reticulum or Golgi apparatus to the cytosol, and from there to the nucleus.

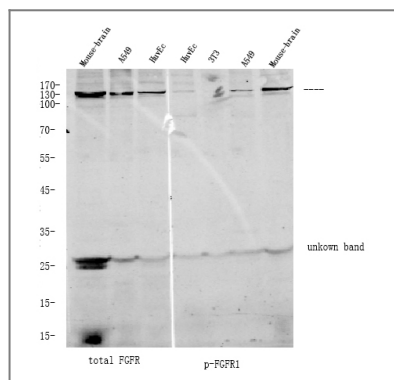
Tissue specificity

Detected in astrocytoma, neuroblastoma and adrenal cortex cell lines. Some isoforms are detected in foreskin fibroblast cell lines, however isoform 17, isoform 18 and isoform 19 are not detected in these cells.

Function

Receptor for basic fibroblast growth factor. Receptor for FGF23 in the presence of KL (By similarity). A shorter form of the receptor could be a receptor for FGF1 (aFGF). Receptor for acidic and basic fibroblast growth factors.

Validation Data



Western Blot image of customer's result

Contact information

Orders: order@immunoway.com
Support: tech@immunoway.com
Telephone: 877-594-3616 (Toll Free), 408-747-0185
Website: <http://www.immunoway.com>
Address: 2200 Ringwood Ave San Jose, CA 95131 USA



Please scan the QR code
to access additional
product information:
FGFR1/2/3/4
(Phospho
Tyr653/654) Rabbit
pAb

For Research Use Only. Not for Use in Diagnostic Procedures.

[Antibody](#) | [ELISA Kits](#) | [Protein](#) | [Reagents](#)