

## ROCK2 (Phospho Tyr722) Rabbit pAb

CatalogNo: YP1714

### Key Features

#### Host Species

- Rabbit

#### Reactivity

- Human, Mouse, Rat

#### Applications

- WB

#### MW

- 153kD (Calculated)

#### Isotype

- IgG

### Storage

**Storage\*** -15°C to -25°C/1 year (Do not lower than -25°C)

**Formulation** Liquid in PBS containing 50% glycerol, 0.5% BSA and 0.02% sodium azide.

### Recommended Dilution Ratios

**WB 1:500-2000**

### Basic Information

**Clonality** Polyclonal

### Immunogen Information

**Immunogen** Synthesized peptide derived from human ROCK2 (Phospho-Tyr722)

**Specificity** This antibody detects endogenous levels of ROCK2 (Phospho-Tyr722) at Human, Mouse, Rat. The name of modified sites may be influenced by many factors, such as species (the modified site was not originally found in human samples) and the change of protein sequence (the previous protein sequence is incomplete, and the protein sequence may be prolonged with the development of protein sequencing technology). When naming, we will use the "numbers" in historical reference to keep the sites consistent with the reports. The antibody binds to the following modification sequence (lowercase letters are modification sites): KlyES

## Target Information

**Gene name** ROCK2 KIAA0619

**Protein Name** ROCK2 (Phospho-Tyr722)

Organism	Gene ID	UniProt ID
Human	<a href="#">9475</a> ;	<a href="#">O75116</a> ;
Mouse	<a href="#">19878</a> ;	<a href="#">P70336</a> ;
Rat	<a href="#">25537</a> ;	<a href="#">Q62868</a> ;

**Cellular Localization**

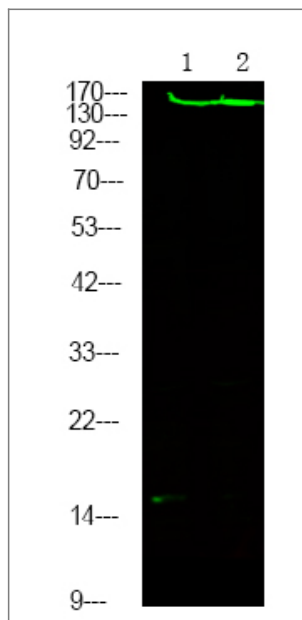
Cytoplasm. Cell membrane ; Peripheral membrane protein . Nucleus. Cytoplasm, cytoskeleton, microtubule organizing center, centrosome. Cytoplasmic, and associated with actin microfilaments and the plasma membrane. .

**Tissue specificity** Expressed in the brain (at protein level).

**Function**

Catalytic activity:ATP + a protein = ADP + a phosphoprotein.,enzyme regulation:Activated by RHOA binding.,Function:Protein kinase that phosphorylates a large number of important signaling proteins, and thereby regulates the assembly of the actin cytoskeleton. Promotes formation of stress fibers and of focal adhesion complexes. Plays a role in smooth muscle contraction.,miscellaneous:Inhibited by Y-27632.,PTM:Phosphorylated upon DNA damage, probably by ATM or ATR.,similarity:Belongs to the protein kinase superfamily. AGC Ser/Thr protein kinase family.,similarity:Contains 1 AGC-kinase C-terminal domain.,similarity:Contains 1 PH domain.,similarity:Contains 1 phorbol-ester/DAG-type zinc finger.,similarity:Contains 1 protein kinase domain.,similarity:Contains 1 REM (Hr1) repeat.,subcellular location:Cytoplasmic, and associated with actin microfilaments and the plasma membrane.,subunit:Homodimer. Binds RHOA that has been activated by GTP binding. Binds IRS1, RHOB and RHOC.,

## Validation Data



Western Blot analysis of mouse spleen /Hela ,using primary antibody at 1:1000 dilution. Secondary antibody(catalog#:RS23920) was diluted at 1:10000

## | Contact information

Orders: order@immunoway.com  
Support: tech@immunoway.com  
Telephone: 877-594-3616 (Toll Free), 408-747-0185  
Website: <http://www.immunoway.com>  
Address: 2200 Ringwood Ave San Jose, CA 95131 USA



Please scan the QR code to access additional product information:  
**ROCK2 (Phospho Tyr722) Rabbit pAb**

---

For Research Use Only. Not for Use in Diagnostic Procedures.

[Antibody](#) | [ELISA Kits](#) | [Protein](#) | [Reagents](#)