

TIFA(Phospho Thr9) Rabbit pAb

CatalogNo: YP1711 Orthogonal Validated 

Key Features

Host Species

- Rabbit

Reactivity

- Human, Mouse, Rat

Applications

- WB

MW

- 20kD (Calculated)

Isotype

- IgG

Storage

Storage* -15°C to -25°C/1 year (Do not lower than -25°C)

Formulation Liquid in PBS containing 50% glycerol, 0.5% BSA and 0.02% sodium azide.

Recommended Dilution Ratios

WB 1:500-2000

Basic Information

Clonality Polyclonal

Immunogen Information

Immunogen Synthesized peptide derived from human TIFA(Phospho-Thr9)

Specificity This antibody detects endogenous levels of TIFA(Phospho-Thr9) at Human, Mouse, Rat. The name of modified sites may be influenced by many factors, such as species (the modified site was not originally found in human samples) and the change of protein sequence (the previous protein sequence is incomplete, and the protein sequence may be prolonged with the development of protein sequencing technology). When naming, we will use the "numbers" in historical reference to keep the sites consistent with the reports. The antibody binds to the following modification sequence (lowercase letters are modification sites): ADtEE

Target Information

Gene name TIFA T2BP

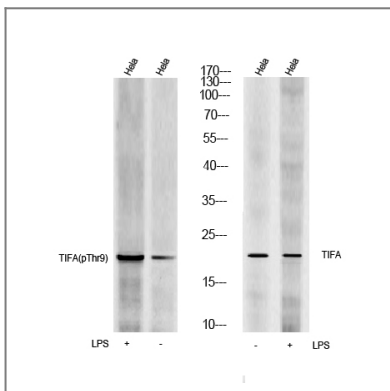
Protein Name TIFA(Phospho-Thr9)

Organism	Gene ID	UniProt ID
Human	92610 ;	Q96CG3 ;
Mouse	211550 ;	Q793I8 ;
Rat	310877 ;	Q5XIB9 ;

Cellular Localization

Cytoplasm . Colocalizes with lysosomal marker LAMP2 following homooligomerization and subsequent activation. .

Validation Data



Western Blot analysis of cell lysis treated or untreated by LPS 100ng/mL 30min, using primary antibody at 1:1000 dilution. Secondary antibody(catalog#:RS23920) was diluted at 1:10000

Contact information

Orders: order@immunoway.com
Support: tech@immunoway.com
Telephone: 877-594-3616 (Toll Free), 408-747-0185
Website: <http://www.immunoway.com>
Address: 2200 Ringwood Ave San Jose, CA 95131 USA



Please scan the QR code to access additional product information:
TIFA(Phospho Thr9)
Rabbit pAb