

MAP3K2 (Phospho Ser520) Rabbit pAb

CatalogNo: YP1703

Key Features

Host Species

- Rabbit

Reactivity

- Human, Mouse, Rat

Applications

- WB

MW

- 68kD (Calculated)

Isotype

- IgG

Storage

Storage* -15°C to -25°C/1 year (Do not lower than -25°C)

Formulation Liquid in PBS containing 50% glycerol, 0.5% BSA and 0.02% sodium azide.

Recommended Dilution Ratios

WB 1:500-2000

Basic Information

Clonality Polyclonal

Immunogen Information

Immunogen Synthesized peptide derived from human MAP3K2 (Phospho-Ser520)

Specificity This antibody detects endogenous levels of MAP3K2 (Phospho-Ser520) at Human, Mouse, Rat. The name of modified sites may be influenced by many factors, such as species (the modified site was not originally found in human samples) and the change of protein sequence (the previous protein sequence is incomplete, and the protein sequence may be prolonged with the development of protein sequencing technology). When naming, we will use the "numbers" in historical reference to keep the sites consistent with the reports. The antibody binds to the following modification sequence (lowercase letters are modification sites): MKSVT

Target Information

Gene name MAP3K2 MAPKKK2 MEKK2

Protein Name MAP3K2 (Phospho-Ser520)

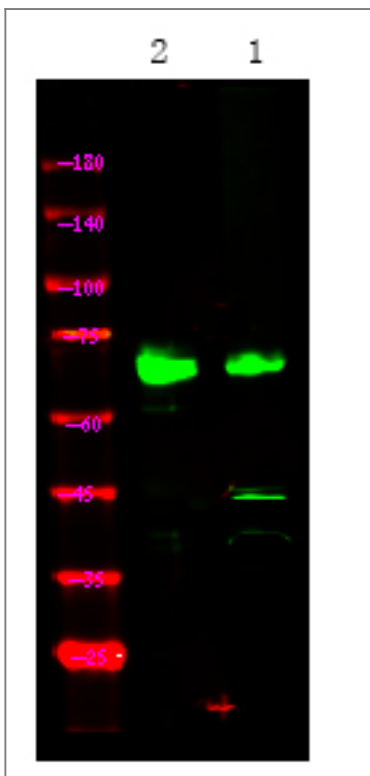
| Organism | Gene ID | UniProt ID |
|----------|------------------------|-------------------------|
| Human | 10746; | Q9Y2U5; |
| Mouse | | Q61083; |

Cellular Localization Cytoplasm . Nucleus . Upon EGF stimulation, translocates into the nucleus.

Tissue specificity Brain,Platelet,T-cell,Teratocarcinoma,Whole embryo,

Function Catalytic activity:ATP + a protein = ADP + a phosphoprotein.,cofactor:Magnesium.,enzyme regulation:Activated by phosphorylation on Thr-524.,Function:Component of a protein kinase signal transduction cascade. Regulates the JNK and ERK5 pathways by phosphorylating and activating MAP2K5 and MAP2K7 (By similarity). Plays a role in caveolae kiss-and-run dynamics.,PTM:Autophosphorylated.,similarity:Belongs to the protein kinase superfamily. STE Ser/Thr protein kinase family. MAP kinase kinase kinase subfamily.,similarity:Contains 1 OPR domain.,similarity:Contains 1 protein kinase domain.,subcellular location:Upon EGF stimulation, translocates into the nucleus.,subunit:Bounds both upstream activators and downstream substrates in multimolecular complexes.,

Validation Data



Western Blot analysis of mouse liver ,using primary antibody at 1:1000 dilution. Secondary antibody(catalog#:RS23920) was diluted at 1:10000

| Contact information

Orders: order@immunoway.com
Support: tech@immunoway.com
Telephone: 877-594-3616 (Toll Free), 408-747-0185
Website: <http://www.immunoway.com>
Address: 2200 Ringwood Ave San Jose, CA 95131 USA



Please scan the QR code to access additional product information:
MAP3K2 (Phospho Ser520) Rabbit pAb

For Research Use Only. Not for Use in Diagnostic Procedures.

[Antibody](#) | [ELISA Kits](#) | [Protein](#) | [Reagents](#)