

## ILK (Phospho Ser343) Rabbit pAb

CatalogNo: YP1702 Orthogonal Validated 

### Key Features

#### Host Species

- Rabbit

#### Reactivity

- Human, Mouse, Rat

#### Applications

- WB

#### MW

- 50kD (Calculated)

#### Isotype

- IgG

### Storage

**Storage\*** -15°C to -25°C/1 year (Do not lower than -25°C)

**Formulation** Liquid in PBS containing 50% glycerol, 0.5% BSA and 0.02% sodium azide.

### Recommended Dilution Ratios

WB 1:500-2000

### Basic Information

**Clonality** Polyclonal

### Immunogen Information

**Immunogen** Synthesized peptide derived from human ILK-1 (Phospho-Ser343)

**Specificity** This antibody detects endogenous levels of ILK-1 (Phospho-Ser343) at Human, Mouse, Rat. The name of modified sites may be influenced by many factors, such as species (the modified site was not originally found in human samples) and the change of protein sequence (the previous protein sequence is incomplete, and the protein sequence may be prolonged with the development of protein sequencing technology). When naming, we will use the "numbers" in historical reference to keep the sites consistent with the reports. The antibody binds to the following modification sequence (lowercase letters are modification sites): KFsFQ

---

## | Target Information

**Gene name** ILK ILK1 ILK2

**Protein Name** ILK-1 (Phospho-Ser343)

Organism	Gene ID	UniProt ID
Human	<a href="#">3611</a> ;	<a href="#">Q13418</a> ;
Mouse	<a href="#">16202</a> ;	<a href="#">O55222</a> ;
Rat	<a href="#">170922</a> ;	<a href="#">Q99J82</a> ;

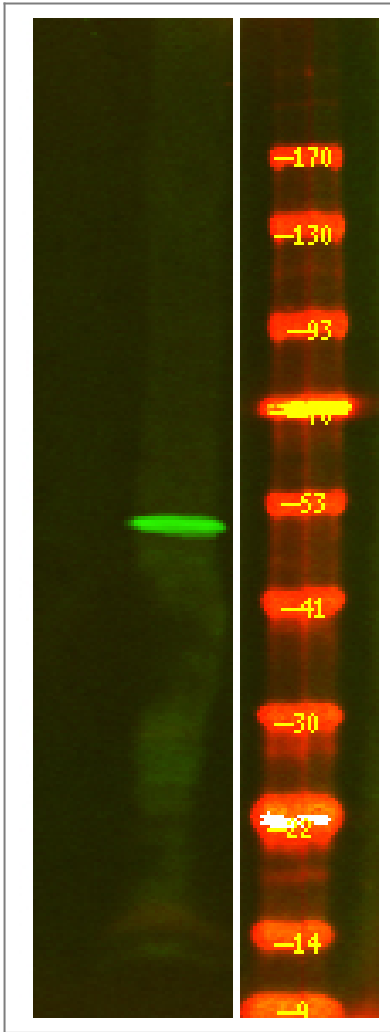
**Cellular Localization** Cell junction, focal adhesion . Cell membrane; Peripheral membrane protein; Cytoplasmic side . Cell projection, lamellipodium . Cytoplasm, myofibril, sarcomere .

**Tissue specificity** Highly expressed in heart followed by skeletal muscle, pancreas and kidney. Weakly expressed in placenta, lung and liver.

**Function** Catalytic activity:ATP + a protein = ADP + a phosphoprotein.,Domain:A PH-like domain is involved in phosphatidylinositol phosphate binding.,enzyme regulation:Stimulated rapidly but transiently by both cell fibronectin interactions, as well as by insulin, in a PI3-K-dependent manner, likely via the binding of PtdIns(3,4,5)P3 with a PH-like domain of ILK.,Function:Receptor-proximal protein kinase regulating integrin-mediated signal transduction. May act as a mediator of inside-out integrin signaling. Focal adhesion protein part of the complex ILK-PINCH. This complex is considered to be one of the convergence points of integrin- and growth factor-signaling pathway. Could be implicated in mediating cell architecture, adhesion to integrin substrates and anchorage-dependent growth in epithelial cells. Phosphorylates beta-1 and beta-3 integrin subunit on serine and threonine residues, but also AKT1 and GSK3B.,PTM:Autophosphorylated on serine residues.,similarity:Belongs to the protein kinase superfamily. TKL Ser/Thr protein kinase family.,similarity:Contains 1 protein kinase domain.,similarity:Contains 5 ANK repeats.,subunit:Interacts with cytoplasmic domain of beta 1 subunit of integrin. Could also interact with beta 2, beta 3 and/or beta 5 subunit of integrin. Interacts (via ANK repeats) with LIMS1 and LIMS2. Interacts with parvins and probably TGFB1I1.,tissue specificity:Highly expressed in heart followed by skeletal muscle, pancreas and kidney. Weakly expressed in placenta, lung and liver.,

---

## | Validation Data



Western Blot analysis of 1 HEK-293 cell, 2 Serum-free treated ,using primary antibody at 1:1000 dilution. Secondary antibody(catalog#:RS23920) was diluted at 1:10000

## Contact information

Orders: [order@immunoway.com](mailto:order@immunoway.com)  
Support: [tech@immunoway.com](mailto:tech@immunoway.com)  
Telephone: 877-594-3616 (Toll Free), 408-747-0185  
Website: <http://www.immunoway.com>  
Address: 2200 Ringwood Ave San Jose, CA 95131 USA



Please scan the QR code to access additional product information:  
**ILK (Phospho Ser343) Rabbit pAb**

For Research Use Only. Not for Use in Diagnostic Procedures.

[Antibody](#) | [ELISA Kits](#) | [Protein](#) | [Reagents](#)