

Raptor (Phospho Ser863) Rabbit pAb

CatalogNo: YP1691

Key Features

Host Species

- Rabbit

Reactivity

- Human, Mouse, Rat

Applications

- WB

MW

- 150kD (Observed)

Isotype

- IgG

Storage

Storage* -15°C to -25°C/1 year (Do not lower than -25°C)

Formulation Liquid in PBS containing 50% glycerol, 0.5% BSA and 0.02% sodium azide.

Recommended Dilution Ratios

WB 1:500-2000

Basic Information

Clonality Polyclonal

Immunogen Information

Immunogen Synthesized peptide derived from human Raptor (Phospho-Ser863)

Specificity This antibody detects endogenous levels of Raptor (Phospho-Ser863) at Human, Mouse, Rat. The name of modified sites may be influenced by many factors, such as species (the modified site was not originally found in human samples) and the change of protein sequence (the previous protein sequence is incomplete, and the protein sequence may be prolonged with the development of protein sequencing technology). When naming, we will use the "numbers" in historical reference to keep the sites consistent with the reports. The antibody binds to the following modification sequence (lowercase letters are modification sites): PASPT

| Target Information

Gene name RPTOR KIAA1303 RAPTOR

Protein Name Raptor (Phospho-Ser863)

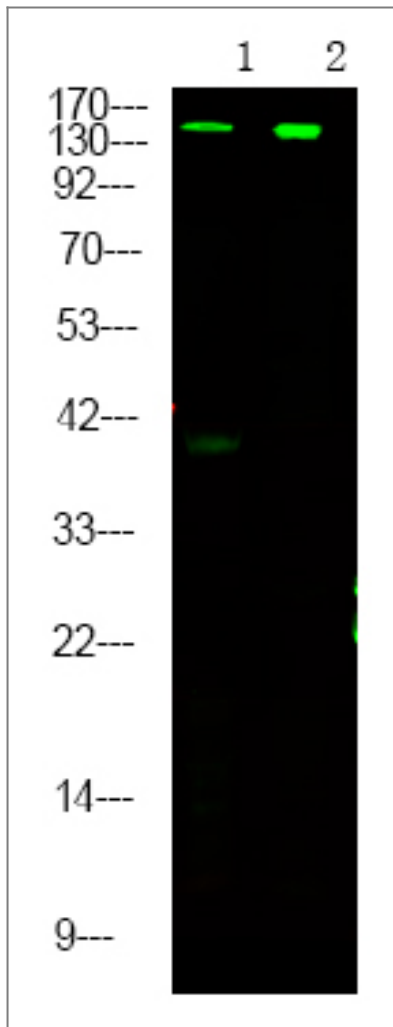
Organism	Gene ID	UniProt ID
Human	57521 ;	Q8N122 ;
Mouse		Q8K4Q0 ;

Cellular Localization Cytoplasm. Lysosome. Cytoplasmic granule . Targeting to lysosomes depends on amino acid availability. In arsenite-stressed cells, accumulates in stress granules when associated with SPAG5 and association with lysosomes is drastically decreased.

Tissue specificity Highly expressed in skeletal muscle, and in a lesser extent in brain, lung, small intestine, kidney and placenta. Isoform 3 is widely expressed, with highest levels in nasal mucosa and pituitary and lowest in spleen.

Function Function:Participates in the FRAP1 pathway and associates in a near stoichiometric ratio with FRAP1 to form a nutrient-sensitive complex (NSC). Plays a pivotal role as a scaffold protein in the FRAP1-signaling pathway and this interaction is essential for the catalyzed phosphorylation of EIF4EBP1. Has a positive role in nutrient-stimulated signaling to the downstream effector RPS6KB1. Under nutrient-deprived conditions, serves as a negative regulator of FRAP1 kinase activity. Regulation of the interaction with FRAP1 is a critical mechanism by which cells coordinate the rate of cell growth and maintenance of cell size with different environmental conditions.,miscellaneous:Rapamycin destabilizes the interaction with FRAP1 regardless of nutrient availability, and its potency for dissociation is increased under nutrient-rich conditions. This action uncouples FRAP1 from its substrates, and inhibits FRAP1 signaling without altering its intrinsic catalytic activity.,similarity:Belongs to the WD repeat RAPTOR family.,similarity:Contains 7 WD repeats.,subunit:Binds directly 4EBP1 and RPS6KB1 independently of its association with FRAP1. Binds preferentially to poorly or non-phosphorylated form of EIF4EBP1, and this binding is critical to the ability of FRAP1 to catalyze phosphorylation. Complex with FRAP1 physically interacts under both leucine-rich and -poor conditions and therefore in at least two nutrient-determined states with different stability.,tissue specificity:Highly expressed in skeletal muscle, and in a lesser extent in brain, lung, small intestine, kidney and placenta.,

| Validation Data



Western Blot analysis of MCF-7 cell, HepG2 cell, mouse heart tissue, using primary antibody at 1:1000 dilution. Secondary antibody (catalog#:RS23920) was diluted at 1:10000

Contact information

Orders: order@immunoway.com
Support: tech@immunoway.com
Telephone: 877-594-3616 (Toll Free), 408-747-0185
Website: <http://www.immunoway.com>
Address: 2200 Ringwood Ave San Jose, CA 95131 USA



Please scan the QR code to access additional product information:
Raptor (Phospho Ser863) Rabbit pAb

For Research Use Only. Not for Use in Diagnostic Procedures.

[Antibody](#) | [ELISA Kits](#) | [Protein](#) | [Reagents](#)