

# SPHK1 (Phospho Ser225) Rabbit pAb

CatalogNo: YP1683 Orthogonal Validated 

## Key Features

### Host Species

- Rabbit

### Reactivity

- Human, Mouse, Rat

### Applications

- WB

### MW

- 42kD (Observed)

### Isotype

- IgG

## Storage

**Storage\*** -15°C to -25°C/1 year (Do not lower than -25°C)

**Formulation** Liquid in PBS containing 50% glycerol, 0.5% BSA and 0.02% sodium azide.

## Recommended Dilution Ratios

WB 1:500-2000

## Basic Information

**Clonality** Polyclonal

## Immunogen Information

**Immunogen** Synthesized peptide derived from human SPHK1 (Phospho-Ser225)

**Specificity** This antibody detects endogenous levels of SPHK1 (Phospho-Ser225) at Human, Mouse, Rat. The name of modified sites may be influenced by many factors, such as species (the modified site was not originally found in human samples) and the change of protein sequence (the previous protein sequence is incomplete, and the protein sequence may be prolonged with the development of protein sequencing technology). When naming, we will use the "numbers" in historical reference to keep the sites consistent with the reports. The antibody binds to the following modification sequence (lowercase letters are modification sites): PAsPV

---

## | Target Information

**Gene name** SPHK1 SPHK SPK

**Protein Name** Sphingosine kinase 1

Organism	Gene ID	UniProt ID
Human	<a href="#">8877</a> ;	<a href="#">Q9NYA1</a> ;
Mouse	<a href="#">20698</a> ;	<a href="#">Q8CI15</a> ;
Rat	<a href="#">170897</a> ;	<a href="#">Q91V26</a> ;

**Cellular Localization**

Cytoplasm . Nucleus . Cell membrane . Endosome membrane ; Peripheral membrane protein . Membrane, clathrin-coated pit . Cell junction, synapse . Translocated from the cytoplasm to the plasma membrane in a CIB1-dependent manner (PubMed:19854831). Binds to membranes containing negatively charged lipids but not neutral lipids (PubMed:24929359). Recruited to endocytic membranes by sphingosine where promotes membrane fusion (By similarity). .

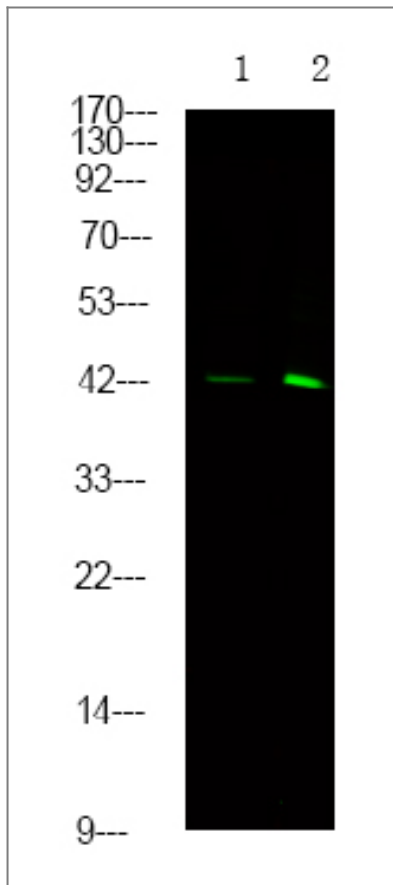
**Tissue specificity** Widely expressed with highest levels in adult liver, kidney, heart and skeletal muscle. Expressed in brain cortex (at protein level) (PubMed:29662056).

**Function**

Catalytic activity:ATP + sphinganine = ADP + sphinganine 1-phosphate.,Catalytic activity:ATP + sphingosine = ADP + sphingosine 1-phosphate.,cofactor:Magnesium.,Function:Catalyzes the phosphorylation of sphingosine to form sphingosine 1-phosphate (SPP), a lipid mediator with both intra-and extracellular functions. Also acts on D-erythro-sphingosine and to a lesser extent sphinganine, but not other lipids, such as D,L-threo-dihydrosphingosine, N,N-dimethylsphingosine, diacylglycerol, ceramide, or phosphatidylinositol.,similarity:Contains 1 DAGKc domain.,subunit:Interacts with ACY1 (By similarity). Binds to calmodulin. Interacts with SPHKAP.,tissue specificity:Widely expressed with highest levels in adult liver, kidney, heart and skeletal muscle.,

---

## | Validation Data



Western Blot analysis of 1 MCF-7 cell, 2 LPS 100ng/mL 30min treated ,using primary antibody at 1:1000 dilution. Secondary antibody(catalog#:RS23920) was diluted at 1:10000

## Contact information

Orders: [order@immunoway.com](mailto:order@immunoway.com)  
Support: [tech@immunoway.com](mailto:tech@immunoway.com)  
Telephone: 877-594-3616 (Toll Free), 408-747-0185  
Website: <http://www.immunoway.com>  
Address: 2200 Ringwood Ave San Jose, CA 95131 USA



Please scan the QR code to access additional product information:  
**SPHK1 (Phospho Ser225) Rabbit pAb**

For Research Use Only. Not for Use in Diagnostic Procedures.

[Antibody](#) | [ELISA Kits](#) | [Protein](#) | [Reagents](#)