

## IRF-5 (Phospho Ser437) Rabbit pAb

CatalogNo: YP1660 Orthogonal Validated 

### Key Features

#### Host Species

- Rabbit

#### Reactivity

- Human, Mouse, Rat

#### Applications

- WB

#### MW

- 55kD (Calculated)

#### Isotype

- IgG

### Storage

**Storage\*** -15°C to -25°C/1 year (Do not lower than -25°C)

**Formulation** Liquid in PBS containing 50% glycerol, 0.5% BSA and 0.02% sodium azide.

### Recommended Dilution Ratios

WB 1:500-2000

### Basic Information

**Clonality** Polyclonal

### Immunogen Information

**Immunogen** Synthesized peptide derived from human IRF5 (Phospho-Ser437)

**Specificity** This antibody detects endogenous levels of IRF5 (Phospho-Ser437) at Human, Mouse, Rat. The name of modified sites may be influenced by many factors, such as species (the modified site was not originally found in human samples) and the change of protein sequence (the previous protein sequence is incomplete, and the protein sequence may be prolonged with the development of protein sequencing technology). When naming, we will use the "numbers" in historical reference to keep the sites consistent with the reports. The antibody binds to the following modification sequence (lowercase letters are modification sites): SWsAD

## Target Information

**Gene name** IRF5

**Protein Name** IRF5 (Phospho-Ser437)

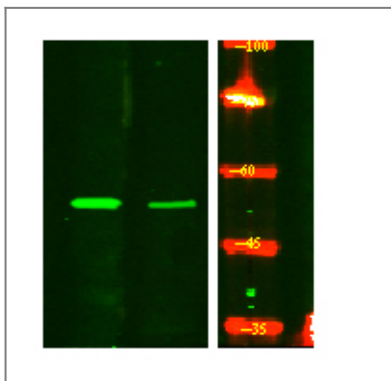
Organism	Gene ID	UniProt ID
Human	<a href="#">3663</a> ;	<a href="#">Q13568</a> ;
Mouse	<a href="#">27056</a> ;	<a href="#">P56477</a> ;

**Cellular Localization** Cytoplasm . Nucleus . Shuttles between the nucleus and the cytoplasm: upon activation by the TLR adapter MYD88 and subsequent phosphorylation, translocates to the nucleus. .

**Tissue specificity** Kidney,

**Function** Disease:Genetic variations in IRF5 are associated with susceptibility to inflammatory bowel disease type 14 (IBD14) [MIM:612245]. Inflammatory bowel disease (IBD) is a form of remitting Crohn disease (CD). CD may involve any part of the gastrointestinal tract, but most frequently the terminal ileum and colon. Bowel inflammation is transmural and discontinuous. CD is commonly classified as an autoimmune disease.,Disease:Genetic variations in IRF5 are associated with susceptibility to rheumatoid arthritis (RA) [MIM:180300]. Rheumatoid arthritis is a complex, multifactorial disorder. It is one of the most common autoimmune diseases and it is characterized by inflammation of synovial tissue and joint destruction.,Disease:Genetic variations in IRF5 are associated with susceptibility to systemic lupus erythematosus type 10 (SLEB10) [MIM:612251]. Systemic lupus erythematosus (SLE) is a chronic, inflammatory and often febrile multisystemic disorder of connective tissue. It affects principally the skin, joints, kidneys and serosal membranes. It is thought to represent a failure of the regulatory mechanisms of the autoimmune system.,similarity:Belongs to the IRF family.,similarity:Contains 1 tryptophan pentad repeat DNA-binding domain.,

## Validation Data



Western Blot analysis of HeLa treated or untreated by LPS lysis, using primary antibody at 1:1000 dilution. Secondary antibody(catalog#:RS23920) was diluted at 1:10000

## Contact information

Orders: order@immunoway.com  
Support: tech@immunoway.com  
Telephone: 877-594-3616 (Toll Free), 408-747-0185  
Website: http://www.immunoway.com  
Address: 2200 Ringwood Ave San Jose, CA 95131 USA



Please scan the QR code to access additional product information:  
**IRF-5 (Phospho Ser437) Rabbit pAb**

---

For Research Use Only. Not for Use in Diagnostic Procedures.

[Antibody](#) | [ELISA Kits](#) | [Protein](#) | [Reagents](#)