

# Histone H1 (Phospho Ser1) Rabbit pAb

CatalogNo: YP1657 Orthogonal Validated 

## Key Features

### Host Species

- Rabbit

### Reactivity

- Human, Mouse, Rat

### Applications

- WB

### MW

- 17-25kD (Observed)

### Isotype

- IgG

## Storage

**Storage\*** -15°C to -25°C/1 year (Do not lower than -25°C)

**Formulation** PBS, pH 7.4, containing 0.5% BSA, 0.02% sodium azide as Preservative and 50% Glycerol.

## Recommended Dilution Ratios

**WB** 1:1000-2000

## Basic Information

**Clonality** Polyclonal

## Immunogen Information

**Immunogen** Synthetic Peptide of Histone H1 (Phospho Ser1)

**Specificity** The antibody detects endogenous Histone H1 (Phospho Ser1) protein.

## Target Information

**Gene name** HIST1H1A/HIST1H1C/HIST1H1D/HIST1H1E

**Protein Name** Histone H1.1/Histone H1.2/Histone H1.3/Histone H1.4

**Organism**

**Gene ID**

**UniProt ID**

Human [3024](#); [3006](#); [3007](#); [3008](#);

[Q02539](#); [P16403](#); [P16402](#); [P10412](#);

Mouse [80838](#); [50708](#); [14957](#); [50709](#);

Rat [291145](#); [201097](#);

[D4A3K5](#); [P15865](#);

**Cellular Localization**

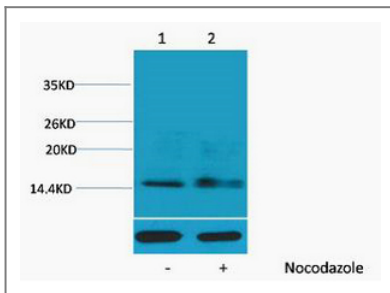
Nucleus . Chromosome . Mainly localizes in euchromatin.

**Tissue specificity** Placenta,

**Function**

Function:Histones H1 are necessary for the condensation of nucleosome chains into higher order structures.,similarity:Belongs to the histone H1/H5 family.,

## Validation Data



Western blot analysis of extracts from HeLa cells, untreated (-) or treated, 1:5000. Secondary antibody(catalog#:RS0002) was diluted at 1:20000

## Contact information

Orders: [order@immunoway.com](mailto:order@immunoway.com)  
Support: [tech@immunoway.com](mailto:tech@immunoway.com)  
Telephone: 877-594-3616 (Toll Free), 408-747-0185  
Website: <http://www.immunoway.com>  
Address: 2200 Ringwood Ave San Jose, CA 95131 USA



Please scan the QR code to access additional product information:  
**Histone H1 (Phospho Ser1) Rabbit pAb**

For Research Use Only. Not for Use in Diagnostic Procedures.

[Antibody](#) | [ELISA Kits](#) | [Protein](#) | [Reagents](#)