

Histone H1 (Phospho Thr3) Rabbit pAb

CatalogNo: YP1655 **Orthogonal Validated** 

Key Features

Host Species

- Rabbit

Reactivity

- Human, Mouse, Rat

Applications

- WB

MW

- 17-25kD (Observed)

Isotype

- IgG

Storage

Storage* -15°C to -25°C/1 year (Do not lower than -25°C)**Formulation** PBS, pH 7.4, containing 0.5% BSA, 0.02% sodium azide as Preservative and 50% Glycerol.

Recommended Dilution Ratios

WB 1:1000-2000

Basic Information

Clonality Polyclonal

Immunogen Information

Immunogen Synthetic Peptide of Histone H1 (Phospho Thr3)**Specificity** The antibody detects endogenous Histone H1 (Phospho Thr3) protein.

Target Information

Gene name HIST1H1A/HIST1H1C/HIST1H1D/HIST1H1E

Protein Name Histone H1.1/Histone H1.2/Histone H1.3/Histone H1.4

Organism

Gene ID

UniProt ID

Human [3024](#); [3006](#); [3007](#); [3008](#);

[Q02539](#); [P16403](#); [P16402](#); [P10412](#);

Mouse [80838](#); [50708](#); [14957](#); [50709](#);

Rat [291145](#); [201097](#);

[D4A3K5](#); [P15865](#);

Cellular Localization

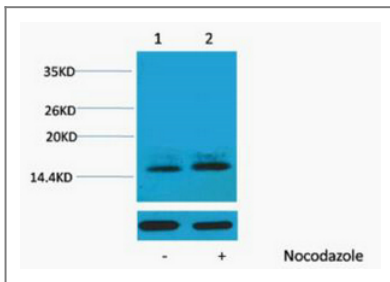
Nucleus . Chromosome . Mainly localizes in euchromatin.

Tissue specificity Placenta,

Function

Function:Histones H1 are necessary for the condensation of nucleosome chains into higher order structures.,similarity:Belongs to the histone H1/H5 family.,

Validation Data



Western blot analysis of extracts from HeLa cells, untreated (-) or treated, 1:5000. Secondary antibody(catalog#:RS0002) was diluted at 1:20000

Contact information

Orders: order@immunoway.com
Support: tech@immunoway.com
Telephone: 877-594-3616 (Toll Free), 408-747-0185
Website: <http://www.immunoway.com>
Address: 2200 Ringwood Ave San Jose, CA 95131 USA



Please scan the QR code to access additional product information:
Histone H1 (Phospho Thr3) Rabbit pAb

For Research Use Only. Not for Use in Diagnostic Procedures.

[Antibody](#) | [ELISA Kits](#) | [Protein](#) | [Reagents](#)