

PEPC (Phospho Ser15) Rabbit pAb

CatalogNo: YP1636

Key Features

Host Species

- Rabbit

Reactivity

- A. comosus, A. thaliana, H. vulgare, J. curcas, M. crystallinum, N. tabacum, Z. mays, T. weissfloggi

Applications

- WB, ELISA, IHC

MW

- 105-110kD (Observed)

Isotype

- IgG

Storage

Storage* -15°C to -25°C/1 year (Do not lower than -25°C)

Formulation PBS, pH 7.4, containing 0.5% BSA, 0.02% sodium azide as Preservative and 50% Glycerol.

Recommended Dilution Ratios

WB 1:500-2000

IHC 1:50-300

ELISA 1:2000-20000

Basic Information

Clonality Polyclonal

Immunogen Information

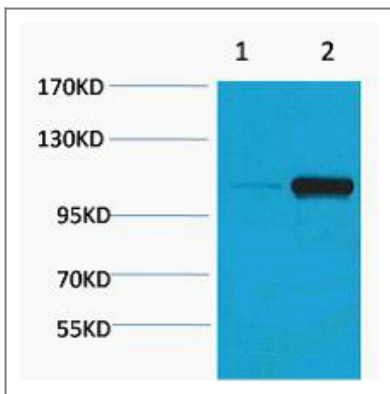
Immunogen Synthetic Peptide of PEPC (Phospho Ser15)

Specificity The antibody detects endogenous PEPC (Phospho Ser15) protein.

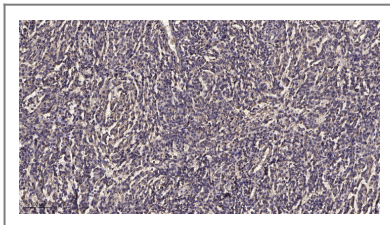
Target Information

Gene name	PGC
Protein Name	Phosphoenolpyruvate carboxylase
Cellular Localization	Secreted.
Tissue specificity	Brain,Liver,Placenta,Stomach,
Function	Catalytic activity:More restricted specificity than pepsin A, but shows preferential cleavage at Tyr- -Xaa bonds. High activity on hemoglobin.,Function:Hydrolyzes a variety of proteins.,similarity:Belongs to the peptidase A1 family.,

Validation Data



Western blot analysis of Maize 1) Dark, 2) Light, diluted at 1:2000. Secondary antibody(catalog#:RS0002) was diluted at 1:20000



Immunohistochemical analysis of paraffin-embedded human meningioma. 1, Antibody was diluted at 1:200(4° overnight). 2, Tris-EDTA,pH9.0 was used for antigen retrieval. 3,Secondary antibody was diluted at 1:200(room temperature, 45min).

Contact information

Orders: order@immunoway.com
 Support: tech@immunoway.com
 Telephone: 877-594-3616 (Toll Free), 408-747-0185
 Website: <http://www.immunoway.com>
 Address: 2200 Ringwood Ave San Jose, CA 95131 USA



Please scan the QR code to access additional product information:
PEPC (Phospho Ser15) Rabbit pAb