

PDK1 (Phospho Tyr243) Rabbit pAb

CatalogNo: YP1632

Key Features

Host Species

- Rabbit

Reactivity

- Human, Mouse, Rat

Applications

- WB, ELISA, IHC

MW

- 50kD (Observed)

Isotype

- IgG

Recommended Dilution Ratios

WB 1:500-2000**IHC 1:50-300****ELISA 1:2000-20000**

Storage

Storage*

-15°C to -25°C/1 year (Do not lower than -25°C)

Formulation

Liquid in PBS containing 50% glycerol, 0.5% BSA and 0.02% sodium azide.

Basic Information

Clonality

Polyclonal

Immunogen Information

Immunogen

Synthesized peptide derived from human PDHK1 (Phospho Tyr243)

Specificity

This antibody detects endogenous levels of Human, Mouse, Rat PDHK1 (Phospho Tyr243). The name of modified sites may be influenced by many factors, such as species (the modified site was not originally found in human samples) and the change of protein sequence (the previous protein sequence is incomplete, and the protein sequence may be prolonged with the development of protein sequencing technology). When naming, we will use the "numbers" in historical reference to keep the sites consistent with the reports. The antibody binds to the following modification sequence (lowercase letters are modification sites): Y(p)Y

| Target Information

Gene name PDK1 PDHK1

Protein Name PDHK1 (Phospho Tyr243)

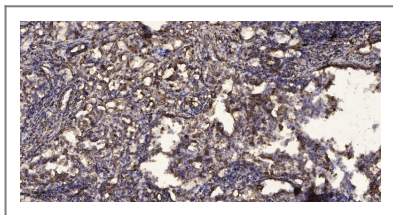
Organism	Gene ID	UniProt ID
Human	5163;	Q15118;
Mouse	228026;	Q8BFP9;
Rat		Q63065;

Cellular Localization Mitochondrion matrix .

Tissue specificity Expressed predominantly in the heart. Detected at lower levels in liver, skeletal muscle and pancreas.

Function Catalytic activity:ATP + [pyruvate dehydrogenase (acetyl-transferring)] = ADP + [pyruvate dehydrogenase (acetyl-transferring)] phosphate.,Function:Inhibits the mitochondrial pyruvate dehydrogenase complex by phosphorylation of the E1 alpha subunit, thus contributing to the regulation of glucose metabolism.,similarity:Belongs to the PDK/BCKDK protein kinase family.,similarity:Contains 1 histidine kinase domain.,tissue specificity:Expressed predominantly in the heart.,

| Validation Data



Immunohistochemical analysis of paraffin-embedded human Squamous cell carcinoma of lung. 1, Antibody was diluted at 1:200(4° overnight). 2, Tris-EDTA,pH9.0 was used for antigen retrieval. 3,Secondary antibody was diluted at 1:200(room temperature, 45min).

| Contact information

Orders: order@immunoway.com
Support: tech@immunoway.com
Telephone: 877-594-3616 (Toll Free), 408-747-0185
Website: <http://www.immunoway.com>
Address: 2200 Ringwood Ave San Jose, CA 95131 USA



Please scan the QR code to access additional product information:
PDK1 (Phospho Tyr243) Rabbit pAb

