

## Rac1/CDC42 (Phospho Ser71) Rabbit pAb

CatalogNo: YP1620 Orthogonal Validated 

### Key Features

#### Host Species

- Rabbit

#### Reactivity

- Human, Mouse, Rat

#### Applications

- WB, ELISA, IHC

#### MW

- 21kD (Calculated)

#### Isotype

- IgG

### Storage

**Storage\*** -15°C to -25°C/1 year (Do not lower than -25°C)**Formulation** Liquid in PBS containing 50% glycerol, 0.5% BSA and 0.02% sodium azide.

### Recommended Dilution Ratios

**WB 1:500-2000****IHC 1:50-300****ELISA 1:2000-20000**

### Basic Information

**Clonality** Polyclonal

### Immunogen Information

**Immunogen** Synthesized peptide derived from human Rac1/CDC42 (Phospho Ser71)**Specificity** This antibody detects endogenous levels of Human, Mouse, Rat Rac1/CDC42 (Phospho Ser71). The name of modified sites may be influenced by many factors, such as species (the modified site was not originally found in human samples) and the change of protein sequence (the previous protein sequence is incomplete, and the protein sequence may be prolonged with the development of protein sequencing technology). When naming, we will use the "numbers" in historical reference to keep the sites consistent with the reports. The antibody binds to the following modification sequence (lowercase letters are modification sites): PLsYP

## Target Information

**Gene name** RAC1 TC25 MIG5

**Protein Name** Rac1/CDC42 (Phospho Ser71)

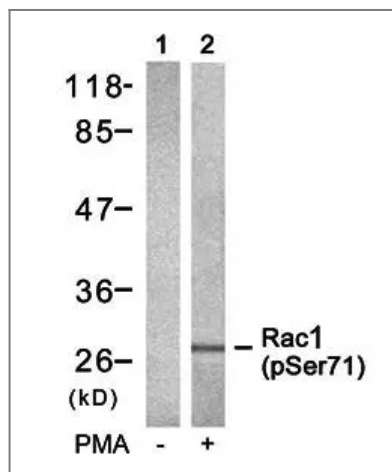
Organism	Gene ID	UniProt ID
Human	<a href="#">5879</a> ;	<a href="#">P63000</a> ; <a href="#">P15153</a> ; <a href="#">P60763</a> ; <a href="#">P60953</a> ;
Mouse	<a href="#">19353</a> ;	<a href="#">P63001</a> ;
Rat	<a href="#">363875</a> ;	<a href="#">Q6RUV5</a> ;

### Cellular Localization

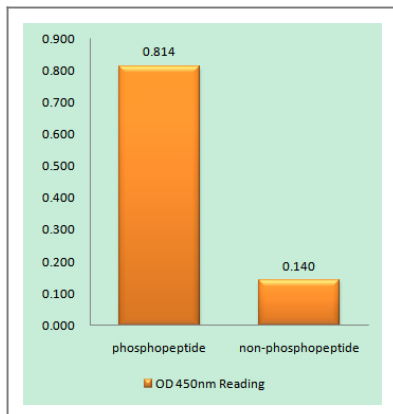
Cell membrane ; Lipid-anchor ; Cytoplasmic side . Melanosome . Cytoplasm . Cell projection, lamellipodium . Cell projection, dendrite . Cell junction, synapse . Nucleus . Inner surface of plasma membrane possibly with attachment requiring prenylation of the C-terminal cysteine (PubMed:1903399). Identified by mass spectrometry in melanosome fractions from stage I to stage IV (PubMed:17081065). Found in the ruffled border (a late endosomal-like compartment in the plasma membrane) of bone-resorbing osteoclasts. Localizes to the lamellipodium in a SH3RF1-dependent manner (By similarity). In macrophages, cytoplasmic location increases upon CSF1 stimulation (By similarity). Activation by GTP-binding promotes nuclear localization (PubMed:12551911) .

**Tissue specificity** Isoform B is predominantly identified in skin and epithelial tissues from the intestinal tract. Its expression is elevated in colorectal tumors at various stages of neoplastic progression, as compared to their respective adjacent tissues.

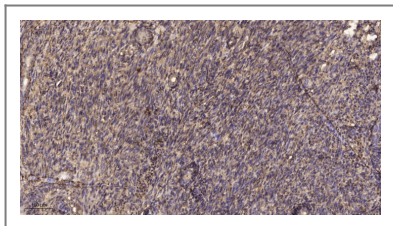
## Validation Data



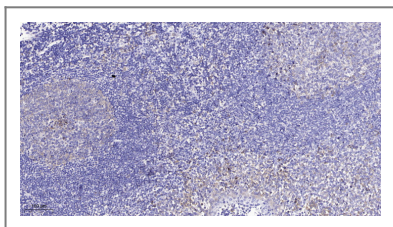
Western blot analysis of Rac1(Phospho-Ser71) antibody in 293 cells lysates, cell treated or untreated with PMA 125ng/ml 30', 4° overnight, secondary antibody (cat: RS0002) was diluted at 1:10000, 37° 1 hour.



Enzyme-Linked Immunosorbent Assay (Phospho-ELISA) for Immunogen Phosphopeptide (Phospho-left) and Non-Phosphopeptide (Phospho-right), using Rac1(Phospho-Ser71) antibody



Immunohistochemical analysis of paraffin-embedded human uterus. 1, Antibody was diluted at 1:200(4° overnight). 2, Tris-EDTA,pH9.0 was used for antigen retrieval. 3,Secondary antibody was diluted at 1:200(room temperature, 45min).



Immunohistochemical analysis of paraffin-embedded human tonsil. 1, Antibody was diluted at 1:200(4° overnight). 2, Tris-EDTA,pH9.0 was used for antigen retrieval. 3,Secondary antibody was diluted at 1:200(room temperature, 45min).

## Contact information

Orders: [order@immunoway.com](mailto:order@immunoway.com)  
 Support: [tech@immunoway.com](mailto:tech@immunoway.com)  
 Telephone: 877-594-3616 (Toll Free), 408-747-0185  
 Website: <http://www.immunoway.com>  
 Address: 2200 Ringwood Ave San Jose, CA 95131 USA



Please scan the QR code to access additional product information:  
**Rac1/CDC42 (Phospho Ser71) Rabbit pAb**

For Research Use Only. Not for Use in Diagnostic Procedures.

[Antibody](#) | [ELISA Kits](#) | [Protein](#) | [Reagents](#)