

# LAT (Phospho Tyr255) Rabbit pAb

CatalogNo: YP1611

## Key Features

### Host Species

- Rabbit

### Reactivity

- Human, Mouse, Rat

### Applications

- WB, ELISA, IHC

### MW

- 38kD (Observed)

### Isotype

- IgG

## Storage

**Storage\*** -15°C to -25°C/1 year (Do not lower than -25°C)

**Formulation** Liquid in PBS containing 50% glycerol, 0.5% BSA and 0.02% sodium azide.

## Recommended Dilution Ratios

**WB 1:500-2000**

**IHC 1:50-300**

**ELISA 1:2000-20000**

## Basic Information

**Clonality** Polyclonal

## Immunogen Information

**Immunogen** Synthesized peptide derived from human LAT (Phospho Tyr255)

**Specificity** This antibody detects endogenous levels of Human, Mouse, Rat LAT (Phospho Tyr255). The name of modified sites may be influenced by many factors, such as species (the modified site was not originally found in human samples) and the change of protein sequence (the previous protein sequence is incomplete, and the protein sequence may be prolonged with the development of protein sequencing technology). When naming, we will use the "numbers" in historical reference to keep the sites consistent with the reports. The antibody binds to the following modification sequence (lowercase letters are modification sites): PDyEN

## Target Information

**Gene name** LAT  
**Protein Name** LAT (Phospho Tyr255)

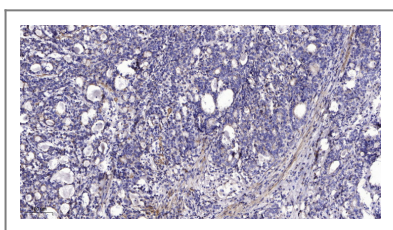
Organism	Gene ID	UniProt ID
Human	<a href="#">27040;</a>	<a href="#">O43561;</a>
Mouse	<a href="#">16797;</a>	<a href="#">O54957;</a>
Rat	<a href="#">81511;</a>	<a href="#">O70601;</a>

**Cellular Localization** Cell membrane ; Single-pass type III membrane protein . Present in lipid rafts.

**Tissue specificity** Expressed in thymus, T-cells, NK cells, mast cells and, at lower levels, in spleen. Present in T-cells but not B-cells (at protein level).

**Function** cell activation, immune effector process, cell activation during immune response, myeloid leukocyte activation, myeloid cell activation during immune response, leukocyte activation during immune response, leukocyte mediated immunity, myeloid leukocyte mediated immunity, mast cell mediated immunity, regulation of leukocyte activation, exocytosis, immune response, cell surface receptor linked signal transduction, integrin-mediated signaling pathway, intracellular signaling cascade, small GTPase mediated signal transduction, Ras protein signal transduction, vesicle-mediated transport, calcium-mediated signaling, second-messenger-mediated signaling, secretion by cell, leukocyte degranulation, mast cell degranulation, regulated secretory pathway, leukocyte activation, mast cell activation, secretion, regulation of T cell activation, regulation of cell activation, regulation of lymphocyte activation,

## Validation Data



Immunohistochemical analysis of paraffin-embedded human Gastric adenocarcinoma. 1, Antibody was diluted at 1:200(4° overnight). 2, Tris-EDTA, pH9.0 was used for antigen retrieval. 3, Secondary antibody was diluted at 1:200(room temperature, 45min).

## Contact information

Orders: [order@immunoway.com](mailto:order@immunoway.com)  
Support: [tech@immunoway.com](mailto:tech@immunoway.com)  
Telephone: 877-594-3616 (Toll Free), 408-747-0185  
Website: <http://www.immunoway.com>  
Address: 2200 Ringwood Ave San Jose, CA 95131 USA



Please scan the QR code to access additional product information:  
**LAT (Phospho Tyr255) Rabbit pAb**

