

EphA7 (Phospho Tyr608) Rabbit pAb

CatalogNo: YP1609 Orthogonal Validated 

Key Features

Host Species

- Rabbit

Reactivity

- Human, Mouse, Rat

Applications

- WB, ELISA

MW

- 112kD (Observed)

Isotype

- IgG

Storage

Storage* -15°C to -25°C/1 year (Do not lower than -25°C)

Formulation Liquid in PBS containing 50% glycerol, 0.5% BSA and 0.02% sodium azide.

Recommended Dilution Ratios

WB 1:1000-2000

ELISA 1:5000-20000

Basic Information

Clonality Polyclonal

Immunogen Information

Immunogen Synthesized peptide derived from human EPHA7 (Phospho Tyr608)

Specificity This antibody detects endogenous levels of Human, Mouse, Rat EPHA7 (Phospho Tyr608). The name of modified sites may be influenced by many factors, such as species (the modified site was not originally found in human samples) and the change of protein sequence (the previous protein sequence is incomplete, and the protein sequence may be prolonged with the development of protein sequencing technology). When naming, we will use the "numbers" in historical reference to keep the sites consistent with the reports. The antibody binds to the following modification sequence (lowercase letters are modification sites): KTyID

Target Information

Gene name EPHA7 EHK3 HEK11

Protein Name EPHA7 (Phospho Tyr608)

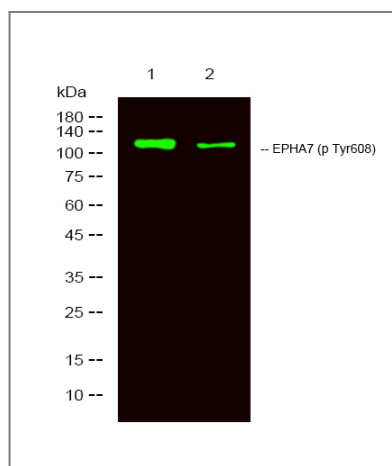
Organism	Gene ID	UniProt ID
Human	2045;	Q15375;
Mouse	13841;	Q61772;
Rat	171287;	P54759;

Cellular Localization Cell membrane ; Single-pass type I membrane protein .

Tissue specificity Widely expressed.

Function cell morphogenesis, cell morphogenesis involved in differentiation, morphogenesis of a branching structure, protein amino acid phosphorylation, phosphorus metabolic process, phosphate metabolic process, cell motion, cell surface receptor linked signal transduction, enzyme linked receptor protein signaling pathway, transmembrane receptor protein tyrosine kinase signaling pathway, axonogenesis, axon guidance, regulation of cell death, positive regulation of cell death, phosphorylation, cell projection organization, neuron differentiation, neuron projection development,retinal ganglion cell axon guidance, cellular component morphogenesis, cell part morphogenesis, regulation of apoptosis, positive regulation of apoptosis, regulation of programmed cell death, positive regulation of programmed cell death, regulation of neuron apoptosis, positive regulation of neuron apoptosis, neuron development, cell morphogenesis involved in neuron differentiation, branching morphogenesis of a nerve, neuron projection morphogenesis, cell projection morphogenesis,

Validation Data



Western Blot analysis of 1 Hela, 2 treated with LPS 100ng/mL 20mim, using primary antibody at 1:1000 dilution. Secondary antibody(catalog#:RS23920) was diluted at 1:10000

| Contact information

Orders: order@immunoway.com
Support: tech@immunoway.com
Telephone: 877-594-3616 (Toll Free), 408-747-0185
Website: <http://www.immunoway.com>
Address: 2200 Ringwood Ave San Jose, CA 95131 USA



Please scan the QR code to access additional product information:
EphA7 (Phospho Tyr608) Rabbit pAb

For Research Use Only. Not for Use in Diagnostic Procedures.

[Antibody](#) | [ELISA Kits](#) | [Protein](#) | [Reagents](#)