

DDR1 (Phospho Tyr796) Rabbit pAb

CatalogNo: YP1606 Orthogonal Validated 

Key Features

Host Species

- Rabbit

Reactivity

- Human, Mouse, Rat

Applications

- WB, ELISA

MW

- 100kD (Observed)

Isotype

- IgG

Storage

Storage* -15°C to -25°C/1 year (Do not lower than -25°C)

Formulation Liquid in PBS containing 50% glycerol, 0.5% BSA and 0.02% sodium azide.

Recommended Dilution Ratios

WB 1:1000-2000

ELISA 1:5000-20000

Basic Information

Clonality Polyclonal

Immunogen Information

Immunogen Synthesized peptide derived from human DDR1 (Phospho Tyr796)

Specificity This antibody detects endogenous levels of Human, Mouse, Rat DDR1 (Phospho Tyr796). The name of modified sites may be influenced by many factors, such as species (the modified site was not originally found in human samples) and the change of protein sequence (the previous protein sequence is incomplete, and the protein sequence may be prolonged with the development of protein sequencing technology). When naming, we will use the "numbers" in historical reference to keep the sites consistent with the reports. The antibody binds to the following modification sequence (lowercase letters are modification sites): GDyYR

Target Information

Gene name DDR1 CAK EDDR1 NEP NTRK4 PTK3A RTK6 TRKE

Protein Name DDR1 (Phospho Tyr796)

Organism	Gene ID	UniProt ID
Human	780 ;	Q08345 ;
Mouse	12305 ;	Q03146 ;
Rat		Q63474 ;

Cellular Localization

[Isoform 1]: Cell membrane; Single-pass type I membrane protein.; [Isoform 2]: Cell membrane; Single-pass type I membrane protein.; [Isoform 3]: Secreted .; [Isoform 4]: Cell membrane; Single-pass type I membrane protein.

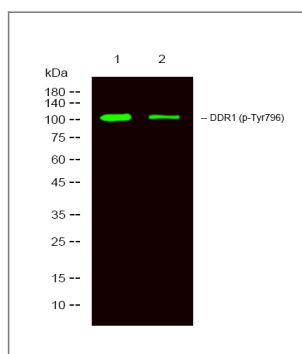
Tissue specificity

Detected in T-47D, MDA-MB-175 and HBL-100 breast carcinoma cells, A-431 epidermoid carcinoma cells, SW48 and SNU-C2B colon carcinoma cells and Hs 294T melanoma cells (at protein level). Expressed at low levels in most adult tissues and is highest in the brain, lung, placenta and kidney. Lower levels of expression are detected in melanocytes, heart, liver, skeletal muscle and pancreas. Abundant in breast carcinoma cell lines. In the colonic mucosa, expressed in epithelia but not in the connective tissue of the lamina propria. In the thyroid gland, expressed in the epithelium of the thyroid follicles. In pancreas, expressed in the islets of Langerhans cells, but not in the surrounding epithelial cells of the exocrine pancreas. In kidney, expressed in the epithelia of the distal tubules. Not expressed in connective tissue, endothelial cells, adipose tissue, muscle cells or cells of hematopoietic origin.

Function

regulation of cell growth, regulation of cell-matrix adhesion, protein amino acid phosphorylation, phosphorus metabolic process, phosphate metabolic process, cell adhesion, cell surface receptor linked signal transduction, enzyme linked receptor protein signaling pathway, transmembrane receptor protein tyrosine kinase signaling pathway, sensory organ development, female pregnancy, embryo implantation, negative regulation of cell proliferation, response to organic substance, regulation of cell-substrate adhesion, phosphorylation, peptidyl-tyrosine phosphorylation, peptidyl-tyrosine modification, biological adhesion, regulation of cell adhesion, mammary gland development, regulation of growth, regulation of cell proliferation, ear development, gland development, response to protein stimulus,

Validation Data



Western Blot analysis of 1 HeLa, 2 treated with LPS 100ng/mL 20min, using primary antibody at 1:1000 dilution. Secondary antibody(catalog#:RS23920) was diluted at 1:10000

| Contact information

Orders: order@immunoway.com
Support: tech@immunoway.com
Telephone: 877-594-3616 (Toll Free), 408-747-0185
Website: <http://www.immunoway.com>
Address: 2200 Ringwood Ave San Jose, CA 95131 USA



Please scan the QR code to access additional product information:
DDR1 (Phospho Tyr796) Rabbit pAb

For Research Use Only. Not for Use in Diagnostic Procedures.

[Antibody](#) | [ELISA Kits](#) | [Protein](#) | [Reagents](#)