

## GABBR2 (Phospho Ser893) Rabbit pAb

CatalogNo: YP1602 Orthogonal Validated 

### Key Features

#### Host Species

- Rabbit

#### Reactivity

- Human, Mouse, Rat

#### Applications

- WB, ELISA

#### MW

- 105kD (Observed)

#### Isotype

- IgG

### Storage

**Storage\*** -15°C to -25°C/1 year (Do not lower than -25°C)

**Formulation** Liquid in PBS containing 50% glycerol, 0.5% BSA and 0.02% sodium azide.

### Recommended Dilution Ratios

**WB 1:1000-2000**

**ELISA 1:5000-20000**

### Basic Information

**Clonality** Polyclonal

### Immunogen Information

**Immunogen** Synthesized peptide derived from human GABBR2 (Phospho Ser893)

**Specificity** This antibody detects endogenous levels of Human, Mouse, Rat GABBR2 (Phospho Ser893). The name of modified sites may be influenced by many factors, such as species (the modified site was not originally found in human samples) and the change of protein sequence (the previous protein sequence is incomplete, and the protein sequence may be prolonged with the development of protein sequencing technology). When naming, we will use the "numbers" in historical reference to keep the sites consistent with the reports. The antibody binds to the following modification sequence (lowercase letters are modification sites): RLSLQ

---

## | Target Information

**Gene name** GABBR2 GPR51 GPRC3B

**Protein Name** GABBR2 (Phospho Ser893)

Organism	Gene ID	UniProt ID
Human	<a href="#">9568</a> ;	<a href="#">O75899</a> ;
Mouse	<a href="#">242425</a> ;	<a href="#">Q80T41</a> ;
Rat	<a href="#">83633</a> ;	<a href="#">O88871</a> ;

**Cellular Localization**

Cell membrane ; Multi-pass membrane protein . Cell junction, synapse, postsynaptic cell membrane ; Multi-pass membrane protein . Coexpression of GABBR1 and GABBR2 is required for GABBR1 maturation and transport to the plasma membrane. In contrast, GABBR2 does not depend on GABBR1 for transport to the cell membrane. .

**Tissue specificity**

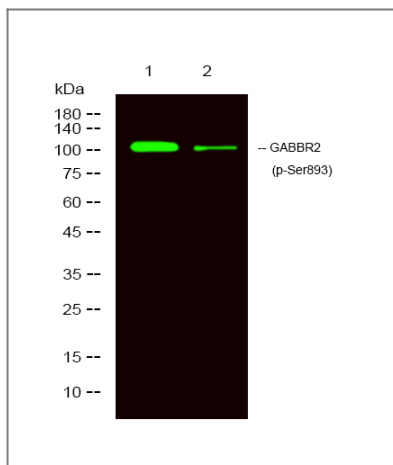
Highly expressed in brain, especially in cerebral cortex, thalamus, hippocampus, frontal, occipital and temporal lobe, occipital pole and cerebellum, followed by corpus callosum, caudate nucleus, spinal cord, amygdala and medulla (PubMed:10087195, PubMed:10328880, PubMed:10727622, PubMed:9872744). Weakly expressed in heart, testis and skeletal muscle (PubMed:10087195, PubMed:10727622).

**Function**

Domain:Alpha-helical parts of the C-terminal intracellular region mediate heterodimeric interaction with GABA-B receptor 1.,Function:Receptor for GABA. The activity of this receptor is mediated by G-proteins that inhibit adenylyl cyclase activity, stimulates phospholipase A2, activates potassium channels, inactivates voltage-dependent calcium-channels and modulates inositol phospholipids hydrolysis. Plays a critical role in the fine-tuning of inhibitory synaptic transmission. Pre-synaptic GABA-B-R inhibit neurotransmitter release by down-regulating high-voltage activated calcium channels, whereas postsynaptic GABA-B-R decrease neuronal excitability by activating a prominent inwardly rectifying potassium (Kir) conductance that underlies the late inhibitory postsynaptic potentials. Not only implicated in synaptic inhibition but also in hippocampal long-term potentiation, slow wave sleep, muscle relaxation and antinociception.,similarity:Belongs to the G-protein coupled receptor 3 family. GABA-B receptor subfamily.,subcellular location:Moreover coexpression of GABA-B-R1 and GABA-B-R2 appears to be a prerequisite for maturation and transport of GABA-B-R1 to the plasma membrane.,subunit:Heterodimer of GABA-B-R1 and GABA-B-R2. Neither of which is effective on its own and homodimeric assembly does not seem to happen. Interacts with ATF4 via its C-terminal region.,tissue specificity:Highly expressed in brain, especially in cerebral cortex, thalamus, hippocampus, frontal, occipital and temporal lobe, occipital pole and cerebellum, followed by corpus callosum, caudate nucleus, spinal cord, amygdala and medulla. Weakly expressed in heart, testis and skeletal muscle.,

---

## | Validation Data



Western Blot analysis of 1 MCF-7 treated with LPS, 2 MCF7, using primary antibody at 1:1000 dilution. Secondary antibody (catalog#:RS23920) was diluted at 1:10000

## Contact information

Orders: [order@immunoway.com](mailto:order@immunoway.com)  
Support: [tech@immunoway.com](mailto:tech@immunoway.com)  
Telephone: 877-594-3616 (Toll Free), 408-747-0185  
Website: <http://www.immunoway.com>  
Address: 2200 Ringwood Ave San Jose, CA 95131 USA



Please scan the QR code to access additional product information:  
**GABBR2 (Phospho Ser893) Rabbit pAb**

For Research Use Only. Not for Use in Diagnostic Procedures.

[Antibody](#) | [ELISA Kits](#) | [Protein](#) | [Reagents](#)