

# Calpain 2 (Phospho Ser50) Rabbit pAb

CatalogNo: YP1593 Orthogonal Validated 

## Key Features

### Host Species

- Rabbit

### Reactivity

- Human, Mouse, Rat

### Applications

- WB, ELISA

### MW

- 69kD (Observed)

### Isotype

- IgG

## Storage

**Storage\*** -15°C to -25°C/1 year (Do not lower than -25°C)

**Formulation** Liquid in PBS containing 50% glycerol, 0.5% BSA and 0.02% sodium azide.

## Recommended Dilution Ratios

**WB 1:1000-2000**

**ELISA 1:5000-20000**

## Basic Information

**Clonality** Polyclonal

## Immunogen Information

**Immunogen** Synthesized peptide derived from human Calpain 2 (Phospho Ser50)

**Specificity** This antibody detects endogenous levels of Human, Mouse, Rat Calpain 2 (Phospho Ser50). The name of modified sites may be influenced by many factors, such as species (the modified site was not originally found in human samples) and the change of protein sequence (the previous protein sequence is incomplete, and the protein sequence may be prolonged with the development of protein sequencing technology). When naming, we will use the "numbers" in historical reference to keep the sites consistent with the reports. The antibody binds to the following modification sequence (lowercase letters are modification sites): DPsFP

## Target Information

**Gene name** CAPN2 CANPL2

**Protein Name** Calpain-2 catalytic subunit (Phospho Ser50)

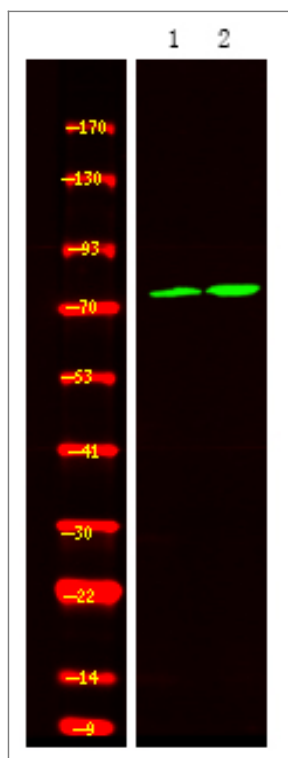
Organism	Gene ID	UniProt ID
Human	<a href="#">824;</a>	<a href="#">P17655;</a>
Mouse	<a href="#">12334;</a>	<a href="#">O08529;</a>
Rat	<a href="#">29154;</a>	<a href="#">Q07009;</a>

**Cellular Localization** Cytoplasm. Cell membrane. Translocates to the plasma membrane upon Ca(2+) binding.

**Tissue specificity** Ubiquitous.

**Function** Catalytic activity:Broad endopeptidase specificity.,cofactor:Binds 3 calcium ions.,enzyme regulation:Activated by 200-1000 micromolar concentrations of calcium and inhibited by calpastatin.,Function:Calcium-regulated non-lysosomal thiol-protease which catalyze limited proteolysis of substrates involved in cytoskeletal remodeling and signal transduction.,sequence Caution:Contaminating sequence. Potential poly-A sequence.,similarity:Belongs to the peptidase C2 family.,similarity:Contains 1 calpain catalytic domain.,similarity:Contains 3 EF-hand domains.,subcellular location:Translocates to the plasma membrane upon Ca(2+) binding.,subunit:Forms a heterodimer with a small (regulatory) subunit (CAPNS1).,tissue specificity:Ubiquitous.,

## Validation Data



Western Blot analysis of 1 A549 cell 2 LPS 100ng/mL 30min treated ,using primary antibody at 1:1000 dilution. Secondary antibody(catalog#:RS23920) was diluted at 1:10000

## | Contact information

Orders: order@immunoway.com  
Support: tech@immunoway.com  
Telephone: 877-594-3616 (Toll Free), 408-747-0185  
Website: <http://www.immunoway.com>  
Address: 2200 Ringwood Ave San Jose, CA 95131 USA



Please scan the QR code to access additional product information:  
**Calpain 2 (Phospho Ser50) Rabbit pAb**

---

For Research Use Only. Not for Use in Diagnostic Procedures.

[Antibody](#) | [ELISA Kits](#) | [Protein](#) | [Reagents](#)