

## YB1 (Phospho Ser102) Rabbit pAb

CatalogNo: YP1555

### Key Features

#### Host Species

- Rabbit

#### Reactivity

- Human, Mouse

#### Applications

- WB

#### MW

- 30kD (Observed)

#### Isotype

- IgG

### Storage

**Storage\*** -15°C to -25°C/1 year (Do not lower than -25°C)

**Formulation** Liquid in PBS containing 50% glycerol, 0.5% BSA and 0.02% sodium azide.

### Recommended Dilution Ratios

**WB 1:1000-2000**

### Basic Information

**Clonality** Polyclonal

### Immunogen Information

**Immunogen** Synthesized phospho peptide around human YB1 (Ser102)

**Specificity** This antibody detects endogenous levels of Human Mouse YB1 (phospho-Ser102)

### Target Information

**Gene name** TPSAB1 TPS1 TPS2 TPSB1

**Protein Name**

YB1 (Ser102)

Organism	Gene ID	UniProt ID
Human	<a href="#">7177</a> ;	<a href="#">Q15661</a> ;
Mouse	<a href="#">100503895</a> ;	<a href="#">Q02844</a> ;
Rat	<a href="#">54271</a> ;	<a href="#">P27435</a> ;

**Cellular Localization**

Secreted. Released from the secretory granules upon mast cell activation. .

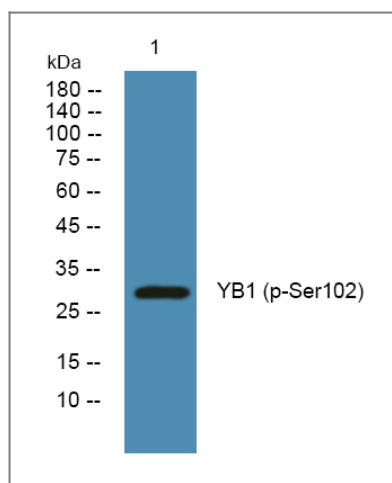
**Tissue specificity**

Isoform 1 and isoform 2 are expressed in lung, stomach, spleen, heart and skin; in these tissues, isoform 1 is predominant. Isoform 2 is expressed in aorta, spleen, and breast tumor, with highest levels in the endothelial cells of some blood vessels surrounding the aorta, as well as those surrounding the tumor and low levels, if any, in mast cells (at protein level).

**Function**

Catalytic activity: Preferential cleavage: Arg-|-Xaa, Lys-|-Xaa, but with more restricted specificity than trypsin. Function: Tryptase is the major neutral protease present in mast cells and is secreted upon the coupled activation-degranulation response of this cell type. Function: Tryptase is the major neutral protease present in mast cells and is secreted upon the coupled activation-degranulation response of this cell type. Has an immunoprotective role during bacterial infection. Required to efficiently combat K.pneumoniae infection. polymorphism: There are two alleles; beta-II and beta-III which differ by 3 residues. similarity: Belongs to the peptidase S1 family. similarity: Belongs to the peptidase S1 family. Tryptase subfamily. similarity: Contains 1 peptidase S1 domain. subcellular location: Released from the secretory granules upon mast cell activation. subunit: Homotetramer. .

## Validation Data



Western blot analysis of lysates from SW480 cells, primary antibody was diluted at 1:1000, 4° over night

## Contact information

Orders: order@immunoway.com  
Support: tech@immunoway.com  
Telephone: 877-594-3616 (Toll Free), 408-747-0185  
Website: http://www.immunoway.com  
Address: 2200 Ringwood Ave San Jose, CA 95131 USA



Please scan the QR code  
to access additional  
product information:  
**YB1 (Phospho  
Ser102) Rabbit pAb**

---

For Research Use Only. Not for Use in Diagnostic Procedures.

[Antibody](#) | [ELISA Kits](#) | [Protein](#) | [Reagents](#)