

KAP1/TIF1 β (Phospho Ser824) Rabbit pAb

CatalogNo: YP1531 Orthogonal Validated 

Key Features

Host Species

- Rabbit

Reactivity

- Human, Mouse, Rat

Applications

- WB, ELISA, IHC

MW

- 110kD (Observed)

Isotype

- IgG

Storage

Storage* -15°C to -25°C/1 year (Do not lower than -25°C)**Formulation** Liquid in PBS containing 50% glycerol, 0.5% BSA and 0.02% sodium azide.

Recommended Dilution Ratios

WB 1:500-2000**IHC 1:50-300****ELISA 1:2000-20000**

Basic Information

Clonality Polyclonal

Immunogen Information

Immunogen Synthesized phospho peptide around human TIF1 β (Ser824)

Specificity This antibody detects endogenous levels of Human TIF1 β (phospho-Ser824). The name of modified sites may be influenced by many factors, such as species (the modified site was not originally found in human samples) and the change of protein sequence (the previous protein sequence is incomplete, and the protein sequence may be prolonged with the development of protein sequencing technology). When naming, we will use the "numbers" in historical reference to keep the sites consistent with the reports. The antibody binds to the following modification sequence (lowercase letters are modification sites): LSSQE

Target Information

Gene name TRIM28 KAP1 RNF96 TIF1B

Protein Name TIF1 β (Ser824)

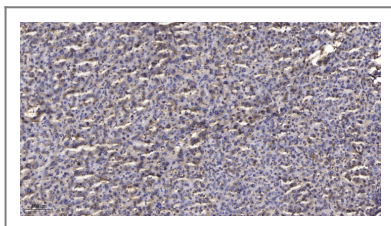
Organism	Gene ID	UniProt ID
Human	10155 ;	Q13263 ;
Mouse	21849 ;	Q62318 ;
Rat	116698 ;	O08629 ;

Cellular Localization Nucleus . Associated with centromeric heterochromatin during cell differentiation through CBX1. .

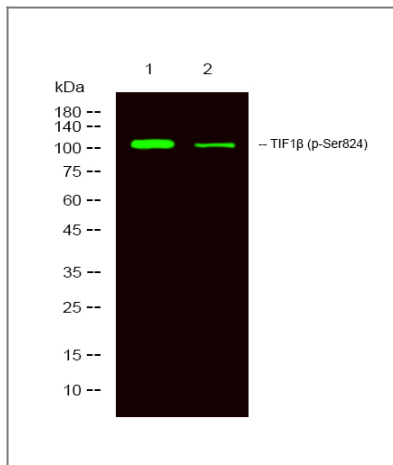
Tissue specificity Expressed in all tissues tested including spleen, thymus, prostate, testis, ovary, small intestine, colon and peripheral blood leukocytes.

Function Domain:Contains one Pro-Xaa-Val-Xaa-Leu (PxVxL) motif, which is required for interaction with chromoshadow domains. This motif requires additional residues -7, -6, +4 and +5 of the central Val which contact the chromoshadow domain.,Domain:The HP1 box is both necessary and sufficient for HP1 binding. The RING finger domain and the B-box domains mediate interaction with CEBPB. The PHD domain enhances the CEBPB transcriptional activity.,Function:Forms a complex with a KRAB-domain transcription factor and increases the efficiency of KRAB-mediated repression. Silences transcription through an interaction with HP1 proteins. Acts as a corepressor of transcription for the KRAB zinc finger proteins and as a moderator of the repression activity. May play a role as a coactivator for CEBPB and NR3C1 in the transcriptional activation of the Alpha-1-acid glycoprotein gene.,PTM:Phosphorylated upon DNA damage, probably by ATM or ATR.,similarity:Belongs to the TRIM/RBCC family.,similarity:Contains 1 bromo domain.,similarity:Contains 1 PHD-type zinc finger.,similarity:Contains 1 RING-type zinc finger.,similarity:Contains 2 B box-type zinc fingers.,subcellular location:Associated with centromeric heterochromatin during cell differentiation through CBX1.,subunit:Associated with HP1 alpha (CBX5), beta (CBX1) and gamma (CBX3) in interphase nuclei (By similarity). Interacts with ZNF382; enhances ZNF382 transcriptional repressor activity (By similarity). Interacts with CEBPB and NR3C1 (By similarity). Interacts with NCOR1 and CHD3. Interacts with SETDB1, ZFP53 and ZFP68. Interacts directly with CBX5 via the PxVxL motif.,

Validation Data



Immunohistochemical analysis of paraffin-embedded human liver cancer. 1, Antibody was diluted at 1:200(4° overnight). 2, Tris-EDTA,pH9.0 was used for antigen retrieval. 3,Secondary antibody was diluted at 1:200(room temperature, 45min).



Western Blot analysis of 1 HeLa, 2 treated with LPS 100ng/mL 20min, using primary antibody at 1:1000 dilution. Secondary antibody(catalog#:RS23920) was diluted at 1:10000

Contact information

Orders: order@immunoway.com
Support: tech@immunoway.com
Telephone: 877-594-3616 (Toll Free), 408-747-0185
Website: <http://www.immunoway.com>
Address: 2200 Ringwood Ave San Jose, CA 95131 USA



Please scan the QR code to access additional product information:
KAP1/TIF1β
(Phospho Ser824)
Rabbit pAb

For Research Use Only. Not for Use in Diagnostic Procedures.

[Antibody](#) | [ELISA Kits](#) | [Protein](#) | [Reagents](#)