

TAZ (Phospho Ser89) Rabbit pAb

CatalogNo: YP1526

Key Features

Host Species

- Rabbit

Reactivity

- Human, Mouse, Rat

Applications

- WB

MW

- 44kD (Observed)

Isotype

- IgG

Storage

Storage* -15°C to -25°C/1 year (Do not lower than -25°C)

Formulation Liquid in PBS containing 50% glycerol, 0.5% BSA and 0.02% sodium azide.

Recommended Dilution Ratios

WB 1:1000-2000

Basic Information

Clonality Polyclonal

Immunogen Information

Immunogen Synthesized phospho peptide around human TAZ (Ser89)

Specificity This antibody detects endogenous levels of Human Mouse Rat TAZ (phospho-Ser89)

Target Information

Gene name WWTR1 TAZ

Protein Name WW domain-containing transcription regulator protein 1

Organism	Gene ID	UniProt ID
Human	25937 ;	Q9GZV5 ;
Mouse	97064 ;	Q9EPK5 ;

Cellular Localization

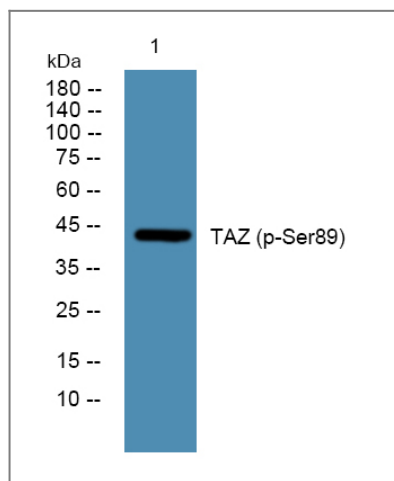
Nucleus . Cytoplasm . Cell membrane . Concentrates along specific portions of the plasma membrane, and accumulates in punctate nuclear bodies (By similarity). When phosphorylated, is retained in the cytoplasm by YWHAZ (By similarity). Can be retained in the nucleus by MED15 (PubMed:18568018). Localized in the cytoplasm in areas of epithelial cell high density (PubMed:21145499). At blastocyst stage expressed in the nucleus in trophoctodermal cells, however expressed in the cytoplasm in the inner cell mass (By similarity). .

Tissue specificity Highly expressed in kidney, heart, placenta and lung. Expressed in the thyroid tissue.

Function

Domain: Binds to transcription factors via its WW domain., Domain: The PDZ-binding motif is essential for stimulated gene transcription. It localizes the protein into both punctate nuclear foci and plasma membrane-associated complexes., Function: Functions as a transcriptional coactivator., PTM: Phosphorylated. Phosphorylation results in the inhibition of transcriptional coactivation through YWHAZ-mediated nuclear export., similarity: Contains 1 WW domain., subcellular location: Concentrates along specific portions of the plasma membrane, and accumulates in punctate nuclear bodies. When phosphorylated, is retained in cytoplasm by YWHAZ., subunit: Binds to SLC9A3R2 via the PDZ motif at the plasma membrane. Binds to YWHAZ in vivo and in vitro through the phosphoserine-binding motif RSHSSP., tissue specificity: Highly expressed in kidney, heart, placenta and lung.,

Validation Data



Western blot analysis of lysates from U2OS cells, primary antibody was diluted at 1:1000, 4° over night

Contact information

Orders: order@immunoway.com
Support: tech@immunoway.com
Telephone: 877-594-3616 (Toll Free), 408-747-0185
Website: http://www.immunoway.com
Address: 2200 Ringwood Ave San Jose, CA 95131 USA



Please scan the QR code
to access additional
product information:
**TAZ (Phospho
Ser89) Rabbit pAb**

For Research Use Only. Not for Use in Diagnostic Procedures.

[Antibody](#) | [ELISA Kits](#) | [Protein](#) | [Reagents](#)