

SGTA (Phospho Ser305) Rabbit pAb

CatalogNo: YP1487

Key Features

Host Species

- Rabbit

Reactivity

- Human, Mouse, Rat

Applications

- WB, ELISA, IHC

MW

- 35kD (Observed)

Isotype

- IgG

Storage

Storage* -15°C to -25°C/1 year (Do not lower than -25°C)**Formulation** Liquid in PBS containing 50% glycerol, 0.5% BSA and 0.02% sodium azide.

Recommended Dilution Ratios

WB 1:500-2000**IHC 1:50-300****ELISA 1:2000-20000**

Basic Information

Clonality Polyclonal

Immunogen Information

Immunogen Synthesized phospho peptide around human SGTA (Ser305)**Specificity** This antibody detects endogenous levels of Human SGTA (phospho-Ser305)

Target Information

Gene name SGTA SGT SGT1

Protein Name SGTA (Ser305)

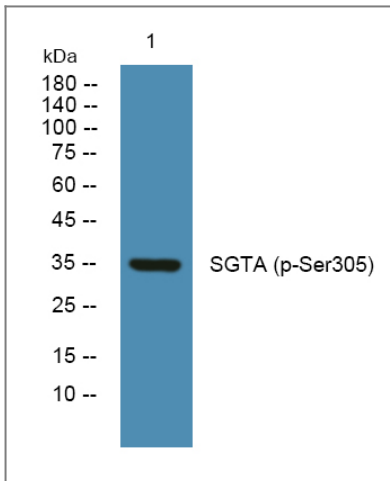
Organism	Gene ID	UniProt ID
Human	6449;	O43765;
Mouse	52551;	Q8BJU0;
Rat	64667;	O70593;

Cellular Localization

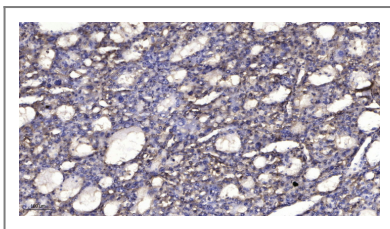
Cytoplasm . Nucleus . Co-localizes with HSP90AB1 in the cytoplasm. Increased nuclear accumulation seen during cell apoptosis. .

Tissue specificity Ubiquitous.

Validation Data



Western blot analysis of lysates from K562 cells, primary antibody was diluted at 1:1000, 4° over night



Immunohistochemical analysis of paraffin-embedded human liver cancer. 1, Antibody was diluted at 1:200(4° overnight). 2, Tris-EDTA,pH9.0 was used for antigen retrieval. 3,Secondary antibody was diluted at 1:200(room temperature, 45min).

Contact information

Orders: order@immunoway.com
Support: tech@immunoway.com
Telephone: 877-594-3616 (Toll Free), 408-747-0185
Website: <http://www.immunoway.com>
Address: 2200 Ringwood Ave San Jose, CA 95131 USA



Please scan the QR code to access additional product information:
SGTA (Phospho Ser305) Rabbit pAb

