

SGK3 (Phospho Thr320) Rabbit pAb

CatalogNo: YP1486

Key Features

Host Species

- Rabbit

Reactivity

- Human, Mouse, Rat

Applications

- WB, IHC

MW

- 54kD (Observed)

Isotype

- IgG

Storage

Storage* -15°C to -25°C/1 year (Do not lower than -25°C)

Formulation Liquid in PBS containing 50% glycerol, 0.5% BSA and 0.02% sodium azide.

Recommended Dilution Ratios

WB 1:500-2000

IHC 1:50-300

Basic Information

Clonality Polyclonal

Immunogen Information

Immunogen Synthesized phospho peptide around human SGK3 (Thr320)

Specificity This antibody detects endogenous levels of Human SGK3 (phospho-Thr320)

Target Information

Gene name SGK3 CISK SGKL

Protein Name Serine/threonine-protein kinase Sgk3

Organism	Gene ID	UniProt ID
Human	100533105 ;	Q96BR1 ;
Mouse	170755 ;	Q9ERE3 ;
Rat		Q8R4V0 ;

Cellular Localization

Cytoplasmic vesicle . Early endosome. Recycling endosome. Endosomal localization is a prerequisite for complete kinase activity. It is essential for its colocalization with the kinase responsible for phosphorylating Ser-486 thus allowing PDPK1 phosphorylation of Thr-320 resulting in complete activation of SGK3. Localized in vesicle-like structures and in the early endosome. Colocalizes with SLC9A3/NHE3 in the recycling endosomes.

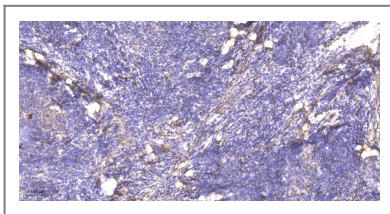
Tissue specificity

Expressed in most tissues with highest levels in pancreas, kidney liver, heart and brain and lower levels in lung, placenta and skeletal muscle. Expression is higher in ER-positive breast tumors than ER-negative breast tumors.

Function

Catalytic activity:ATP + a protein = ADP + a phosphoprotein.,enzyme regulation:Two specific sites, one in the kinase domain (Thr-320) and the other in the C-terminal regulatory region (Ser-486), need to be phosphorylated for its full activation.,Function:Involved in the activation of potassium channels. Mediates cell IL-3-dependent survival signals.,similarity:Belongs to the protein kinase superfamily.,similarity:Belongs to the protein kinase superfamily. AGC Ser/Thr protein kinase family.,similarity:Contains 1 AGC-kinase C-terminal domain.,similarity:Contains 1 protein kinase domain.,similarity:Contains 1 PX (phox homology) domain.,subcellular location:Localized in vesicle-like structures and in the early endosome.,tissue specificity:Expressed in most tissues with highest levels in pancreas, kidney liver, heart and brain and lower levels in lung, placenta and skeletal muscle.,

| Validation Data



Immunohistochemical analysis of paraffin-embedded human cervical carcinoma. 1, Antibody was diluted at 1:200(4° overnight). 2, Tris-EDTA,pH9.0 was used for antigen retrieval. 3,Secondary antibody was diluted at 1:200(room temperature, 45min).

| Contact information

Orders: order@immunoway.com
Support: tech@immunoway.com
Telephone: 877-594-3616 (Toll Free), 408-747-0185
Website: <http://www.immunoway.com>
Address: 2200 Ringwood Ave San Jose, CA 95131 USA



Please scan the QR code to access additional product information:
SGK3 (Phospho Thr320) Rabbit pAb

