

# SATB1 (Phospho Ser47) Rabbit pAb

CatalogNo: YP1478

## Key Features

### Host Species

- Rabbit

### Reactivity

- Human, Mouse, Rat

### Applications

- WB, ELISA, IHC

### MW

- 85kD (Observed)

### Isotype

- IgG

## Storage

**Storage\*** -15°C to -25°C/1 year (Do not lower than -25°C)

**Formulation** Liquid in PBS containing 50% glycerol, 0.5% BSA and 0.02% sodium azide.

## Recommended Dilution Ratios

**WB 1:500-2000**

**IHC 1:50-300**

**ELISA 1:2000-20000**

## Basic Information

**Clonality** Polyclonal

## Immunogen Information

**Immunogen** Synthesized phospho peptide around human SATB1 (Ser47)

**Specificity** This antibody detects endogenous levels of Human Mouse Rat SATB1 (phospho-Ser47)

## Target Information

**Gene name** SATB1

**Protein Name** SATB1 (Ser47)

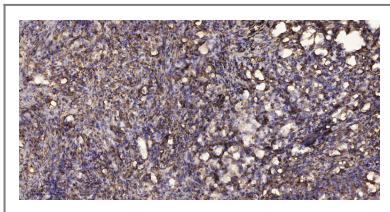
Organism	Gene ID	UniProt ID
Human	<a href="#">6304;</a>	<a href="#">Q01826;</a>
Mouse	<a href="#">20230;</a>	<a href="#">Q60611;</a>

**Cellular Localization** Nucleus matrix . Nucleus, PML body . Organized into a cage-like network anchoring loops of heterochromatin and tethering specialized DNA sequences (PubMed:12692553). When sumoylated, localized in promyelocytic leukemia nuclear bodies (PML NBs) (PubMed:18408014). .

**Tissue specificity** Expressed predominantly in thymus.

**Function** Function: Binds to DNA at special AT-rich sequences at nuclear matrix- or scaffold-associated regions. Thought to recognize the sugar-phosphate structure of double-stranded DNA., PTM: Sumoylated., similarity: Belongs to the CUT homeobox family., similarity: Contains 1 homeobox DNA-binding domain., similarity: Contains 2 CUT DNA-binding domains., tissue specificity: Expressed predominantly in thymus.,

## Validation Data



Immunohistochemical analysis of paraffin-embedded human Squamous cell carcinoma of lung. 1, Antibody was diluted at 1:200 (4° overnight). 2, Tris-EDTA, pH 9.0 was used for antigen retrieval. 3, Secondary antibody was diluted at 1:200 (room temperature, 45 min).

## Contact information

Orders: [order@immunoway.com](mailto:order@immunoway.com)  
Support: [tech@immunoway.com](mailto:tech@immunoway.com)  
Telephone: 877-594-3616 (Toll Free), 408-747-0185  
Website: <http://www.immunoway.com>  
Address: 2200 Ringwood Ave San Jose, CA 95131 USA



Please scan the QR code to access additional product information:  
**SATB1 (Phospho Ser47) Rabbit pAb**

For Research Use Only. Not for Use in Diagnostic Procedures.

[Antibody](#) | [ELISA Kits](#) | [Protein](#) | [Reagents](#)