

ROS1 (Phospho Tyr2274) Rabbit pAb

CatalogNo: YP1469

Key Features

Host Species

- Rabbit

Reactivity

- Human, Mouse, Rat

Applications

- WB, IF

MW

- 258kD (Observed)

Isotype

- IgG

Storage

Storage* -15°C to -25°C/1 year (Do not lower than -25°C)

Formulation Liquid in PBS containing 50% glycerol, 0.5% BSA and 0.02% sodium azide.

Recommended Dilution Ratios

WB 1:1000-2000

IF 1:50-200

Basic Information

Clonality Polyclonal

Immunogen Information

Immunogen Synthesized phospho peptide around human ROS1 (Tyr2274)

Specificity This antibody detects endogenous levels of Human ROS1 (phospho-Tyr2274). The name of modified sites may be influenced by many factors, such as species (the modified site was not originally found in human samples) and the change of protein sequence (the previous protein sequence is incomplete, and the protein sequence may be prolonged with the development of protein sequencing technology). When naming, we will use the "numbers" in historical reference to keep the sites consistent with the reports. The antibody binds to the following modification sequence (lowercase letters are modification sites): LNyMV

Target Information

Gene name ROS1 MCF3 ROS

Protein Name ROS1 (Tyr2274)

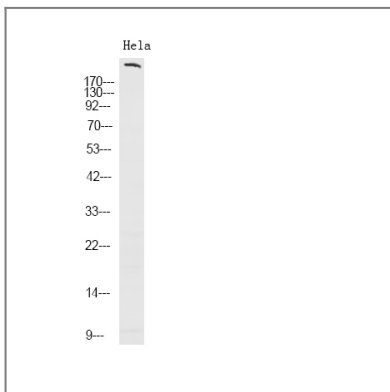
Organism	Gene ID	UniProt ID
Human	6098;	P08922;
Mouse	19886;	Q78DX7;
Rat	25346;	Q63132;

Cellular Localization Cell membrane ; Single-pass type I membrane protein .

Tissue specificity Expressed in brain. Expression is increased in primary gliomas.

Function Catalytic activity:ATP + a [protein]-L-tyrosine = ADP + a [protein]-L-tyrosine phosphate.,Disease:A chromosomal aberration involving ROS1 is found in glioblastoma multiform (GBM). An homozygous deletion in chromosome 6q21 results in expression of a GOPC-ROS1 chimeric protein which has a constitutive receptor tyrosine kinase activity.,Function:This is probably a cell growth or differentiation factor receptor with a tyrosine-protein kinase activity.,similarity:Belongs to the protein kinase superfamily. Tyr protein kinase family. Insulin receptor subfamily.,similarity:Contains 1 protein kinase domain.,similarity:Contains 9 fibronectin type-III domains.,

Validation Data



Western Blot analysis of HeLa using primary antibody at 1:1000 dilution 4°C, overnight. Secondary antibody(catalog#:RS23920) was diluted at 1:10000 25°C, 1.5hours

Contact information

Orders: order@immunoway.com
Support: tech@immunoway.com
Telephone: 877-594-3616 (Toll Free), 408-747-0185
Website: http://www.immunoway.com
Address: 2200 Ringwood Ave San Jose, CA 95131 USA



Please scan the QR code
to access additional
product information:
**ROS1 (Phospho
Tyr2274) Rabbit
pAb**

For Research Use Only. Not for Use in Diagnostic Procedures.

[Antibody](#) | [ELISA Kits](#) | [Protein](#) | [Reagents](#)