

RIP (Phospho Ser166) Rabbit pAb

CatalogNo: YP1467 **Orthogonal Validated** 

Key Features

Host Species

- Rabbit

Reactivity

- Human, Mouse, Rat

Applications

- WB, IHC

MW

- 73kD (Observed)

Isotype

- IgG

Storage

Storage* -15°C to -25°C/1 year (Do not lower than -25°C)**Formulation** Liquid in PBS containing 50% glycerol, 0.5% BSA and 0.02% sodium azide.

Recommended Dilution Ratios

WB 1:500-2000**IHC 1:50-300**

Basic Information

Clonality Polyclonal

Immunogen Information

Immunogen Synthesized phospho peptide around human RIP (Ser166)**Specificity** This antibody detects endogenous levels of Human RIP (phospho-Ser166)

Target Information

Gene name RIPK1 RIP1

Protein Name RIP (Ser166)

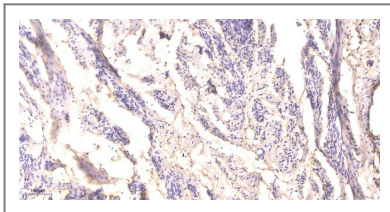
Organism	Gene ID	UniProt ID
Human	8737 ;	Q13546 ;
Mouse	19766 ;	Q60855 ;

Cellular Localization Cytoplasm . Cell membrane .

Tissue specificity Leukemic T-cell,T-cell,Umbilical vein endothelial cell,

Function Catalytic activity:ATP + a protein = ADP + a phosphoprotein.,Function:Promotes apoptosis and activation of NF-kappa-B. Required for TNFRSF1A mediated activation of NF-kappa-B.,PTM:Autophosphorylated on serine and threonine residues.,PTM:Proteolytically cleaved by caspase-8 during TNF-induced apoptosis. Cleavage abolishes NF-kappa-B activation and enhances pro-apototic signaling through the TRADD-FADD interaction.,similarity:Belongs to the protein kinase superfamily. TKL Ser/Thr protein kinase family.,similarity:Contains 1 death domain.,similarity:Contains 1 protein kinase domain.,subunit:Binds to the death domain of TNFRSF6 and TRADD. Is recruited by TRADD to TNFRSF1A in a TNF-dependent process. Binds RIPK3, UBCE7IP1 isoform 3 (ZIN), EGFR, IKBKG, TRAF1, TRAF2 and TRAF3. Interacts with BNLF1. Interacts with SQSTM1 upon TNF-alpha stimulation. May interacts with MAVS/IPS1.,

Validation Data



Immunohistochemical analysis of paraffin-embedded human cervical carcinoma. 1, Antibody was diluted at 1:200 (4°C overnight). 2, Tris-EDTA,pH9.0 was used for antigen retrieval. 3,Secondary antibody was diluted at 1:200 (room temperature, 45min).

Contact information

Orders: order@immunoway.com
Support: tech@immunoway.com
Telephone: 877-594-3616 (Toll Free), 408-747-0185
Website: <http://www.immunoway.com>
Address: 2200 Ringwood Ave San Jose, CA 95131 USA



Please scan the QR code to access additional product information:
RIP (Phospho Ser166) Rabbit pAb