

## RCC1 (Phospho Ser11) Rabbit pAb

CatalogNo: YP1463

### Key Features

#### Host Species

- Rabbit

#### Reactivity

- Human, Mouse, Rat

#### Applications

- WB, IHC

#### MW

- 45kD (Observed)

#### Isotype

- IgG

### Storage

**Storage\*** -15°C to -25°C/1 year (Do not lower than -25°C)

**Formulation** Liquid in PBS containing 50% glycerol, 0.5% BSA and 0.02% sodium azide.

### Recommended Dilution Ratios

**WB 1:500-2000**

**IHC 1:50-300**

### Basic Information

**Clonality** Polyclonal

### Immunogen Information

**Immunogen** Synthesized phospho peptide around human RCC1 (Ser11)

**Specificity** This antibody detects endogenous levels of Human RCC1 (phospho-Ser11). The name of modified sites may be influenced by many factors, such as species (the modified site was not originally found in human samples) and the change of protein sequence (the previous protein sequence is incomplete, and the protein sequence may be prolonged with the development of protein sequencing technology). When naming, we will use the "numbers" in historical reference to keep the sites consistent with the reports. The antibody binds to the following modification sequence (lowercase letters are modification sites):RRsPP

## Target Information

**Gene name** RCC1 CHC1

**Protein Name** RCC1 (Ser11)

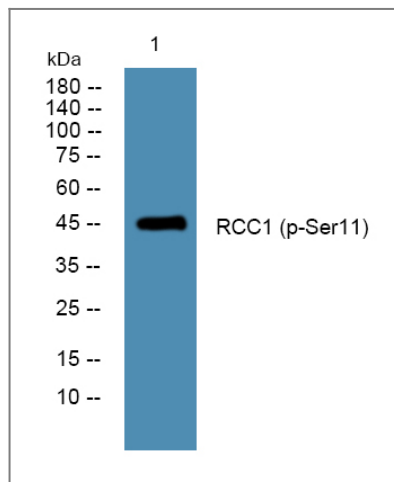
Organism	Gene ID	UniProt ID
Human	<a href="#">1104</a> ;	<a href="#">P18754</a> ;
Mouse	<a href="#">100088</a> ;	<a href="#">Q8VE37</a> ;

**Cellular Localization** Nucleus . Chromosome . Cytoplasm . Predominantly nuclear in interphase cells (PubMed:12194828). Binds to mitotic chromosomes (PubMed:12194828, PubMed:17435751, PubMed:20668449). .

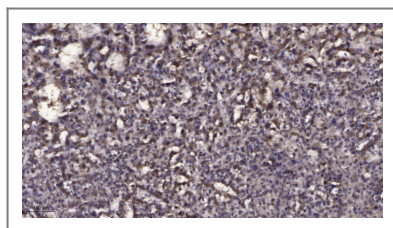
**Tissue specificity** Brain,Breast,Epithelium,Eye,Muscle,Testis,

**Function** Disease:Patients with Raynaud disease produce antibodies that bind to RCC1.,Function:Promotes the exchange of Ran-bound GDP by GTP. Involved in the regulation of onset of chromosome condensation in the S phase. Binds to the chromatin. RCC1/Ran complex (together with other proteins) acts as a component of a signal transmission pathway that detects unreplicated DNA.,similarity:Contains 7 RCC1 repeats.,subcellular location:Becomes dispersed throughout the cytoplasm during mitosis.,

## Validation Data



Western blot analysis of lysates from Jurkat cells, primary antibody was diluted at 1:1000, 4° over night



Immunohistochemical analysis of paraffin-embedded human liver cancer. 1, Antibody was diluted at 1:200(4° overnight). 2, Tris-EDTA,pH9.0 was used for antigen retrieval. 3,Secondary antibody was diluted at 1:200(room temperature, 45min).

## | Contact information

Orders: order@immunoway.com  
Support: tech@immunoway.com  
Telephone: 877-594-3616 (Toll Free), 408-747-0185  
Website: <http://www.immunoway.com>  
Address: 2200 Ringwood Ave San Jose, CA 95131 USA



Please scan the QR code to access additional product information:  
**RCC1 (Phospho Ser11) Rabbit pAb**

---

For Research Use Only. Not for Use in Diagnostic Procedures.

[Antibody](#) | [ELISA Kits](#) | [Protein](#) | [Reagents](#)