

## RanBP3 (Phospho Ser58) Rabbit pAb

CatalogNo: YP1460

### Key Features

#### Host Species

- Rabbit

#### Reactivity

- Human, Mouse, Rat

#### Applications

- WB, ELISA, IHC

#### MW

- 60kD (Observed)

#### Isotype

- IgG

### Storage

**Storage\*** -15°C to -25°C/1 year (Do not lower than -25°C)

**Formulation** Liquid in PBS containing 50% glycerol, 0.5% BSA and 0.02% sodium azide.

### Recommended Dilution Ratios

**WB 1:500-2000**

**IHC 1:50-300**

**ELISA 1:2000-20000**

### Basic Information

**Clonality** Polyclonal

### Immunogen Information

**Immunogen** Synthesized phospho peptide around human RanBP3 (Ser58)

**Specificity** This antibody detects endogenous levels of Human RanBP3 (phospho-Ser58)

### Target Information

**Gene name** RANBP3

**Protein Name** Ran-binding protein 3

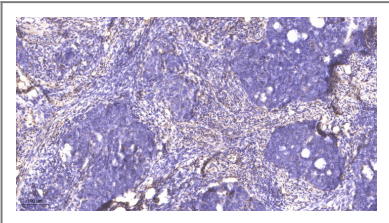
Organism	Gene ID	UniProt ID
Human	<a href="#">8498</a> ;	<a href="#">Q9H6Z4</a> ;
Mouse	<a href="#">71810</a> ;	<a href="#">Q9CT10</a> ;

**Cellular Localization** Cytoplasm . Nucleus .

**Tissue specificity** Widely expressed with high levels in testis and heart.

**Function** Function:Acts as a cofactor for XPO1/CRM1-mediated nuclear export, perhaps as export complex scaffolding protein. Bound to XPO1/CRM1, stabilizes the XPO1/CRM1-cargo interaction. In the absence of Ran-bound GTP prevents binding of XPO1/CRM1 to the nuclear pore complex. Binds to CHC1/RCC1 and increases the guanine nucleotide exchange activity of CHC1/RCC1. Recruits XPO1/CRM1 to CHC1/RCC1 in a Ran-dependent manner.,PTM:Phosphorylated upon DNA damage, probably by ATM or ATR.,similarity:Contains 1 RanBD1 domain.,subunit:Interacts with CHC1 in a Ran-stimulated manner. Interacts with XPO1.,tissue specificity:Widely expressed with high levels in testis and heart.,

## Validation Data



Immunohistochemical analysis of paraffin-embedded human cervical carcinoma. 1, Antibody was diluted at 1:200(4° overnight). 2, Tris-EDTA,pH9.0 was used for antigen retrieval. 3,Secondary antibody was diluted at 1:200(room temperature, 45min).

## Contact information

Orders: [order@immunoway.com](mailto:order@immunoway.com)  
Support: [tech@immunoway.com](mailto:tech@immunoway.com)  
Telephone: 877-594-3616 (Toll Free), 408-747-0185  
Website: <http://www.immunoway.com>  
Address: 2200 Ringwood Ave San Jose, CA 95131 USA



Please scan the QR code to access additional product information:  
**RanBP3 (Phospho Ser58) Rabbit pAb**