

Rad18 (Phospho Ser403) Rabbit pAb

CatalogNo: YP1458

Key Features

Host Species

- Rabbit

Reactivity

- Human, Mouse, Rat

Applications

- WB, ELISA, IHC

MW

- 56kD (Observed)

Isotype

- IgG

Storage

Storage* -15°C to -25°C/1 year (Do not lower than -25°C)

Formulation Liquid in PBS containing 50% glycerol, 0.5% BSA and 0.02% sodium azide.

Recommended Dilution Ratios

WB 1:500-2000

IHC 1:50-300

ELISA 1:2000-20000

Basic Information

Clonality Polyclonal

Immunogen Information

Immunogen Synthesized phospho peptide around human Rad18 (Ser403)

Specificity This antibody detects endogenous levels of Human Rad18 (phospho-Ser403)

Target Information

Gene name RAD18 RNF73

Protein Name E3 ubiquitin-protein ligase RAD18

Organism	Gene ID	UniProt ID
Human	56852;	Q9NS91;
Mouse	58186;	Q9QXK2;

Cellular Localization

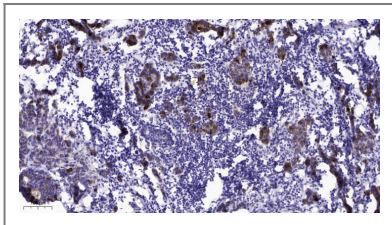
Nucleus . Cytoplasm, cytoskeleton, microtubule organizing center, centrosome . Associates with chromatin (PubMed:25931565). Colocalizes with SLF1 in the nucleus and to centrosomes (PubMed:15632077). Relocalizes with SLF1 to nuclear foci in response to DNA damage (PubMed:22036607). Accumulates with the SLF1-SLF2 and SMC5-SMC6 complexes at replication-coupled DNA interstrand repair and DNA double-strand breaks (DSBs) sites on chromatin in a ubiquitin-dependent manner (PubMed:25931565). .

Tissue specificity Epithelium,Liver,Placenta,

Function

Function:E3 ubiquitin-protein ligase involved in postreplication repair of UV-damaged DNA. Postreplication repair functions in gap-filling of a daughter strand on replication of damaged DNA. Associates to the E2 ubiquitin conjugating enzyme UBE2B to form the UBE2B-RAD18 ubiquitin ligase complex involved in mono-ubiquitination of DNA-associated PCNA on 'Lys-164'. Has ssDNA binding activity.,pathway:Protein modification; protein ubiquitination.,similarity:Belongs to the RAD18 family.,similarity:Contains 1 RING-type zinc finger.,similarity:Contains 1 SAP domain.,subunit:Interacts with UBE2A and UBE2B. Interacts with SHPRH.,

Validation Data



Immunohistochemical analysis of paraffin-embedded human Breast cancer. 1, Antibody was diluted at 1:200(4° overnight). 2, Tris-EDTA,pH9.0 was used for antigen retrieval. 3,Secondary antibody was diluted at 1:200(room temperature, 45min).

Contact information

Orders: order@immunoway.com
Support: tech@immunoway.com
Telephone: 877-594-3616 (Toll Free), 408-747-0185
Website: <http://www.immunoway.com>
Address: 2200 Ringwood Ave San Jose, CA 95131 USA



Please scan the QR code to access additional product information:
Rad18 (Phospho Ser403) Rabbit pAb