

PZR (Phospho Tyr241) Rabbit pAb

CatalogNo: YP1454

Key Features

Host Species

- Rabbit

Reactivity

- Human, Mouse, Rat

Applications

- WB, ELISA, IHC

MW

- 30kD (Observed)

Isotype

- IgG

Storage

Storage* -15°C to -25°C/1 year (Do not lower than -25°C)**Formulation** Liquid in PBS containing 50% glycerol, 0.5% BSA and 0.02% sodium azide.

Recommended Dilution Ratios

WB 1:500-2000**IHC 1:50-300****ELISA 1:2000-20000**

Basic Information

Clonality Polyclonal

Immunogen Information

Immunogen Synthesized phospho peptide around human PZR (Tyr241)**Specificity** This antibody detects endogenous levels of Human Mouse Rat PZR (phospho-Tyr241)

Target Information

Gene name MPZL1 PZR UNQ849/PRO1787

Protein Name

PZR (Tyr241)

Organism	Gene ID	UniProt ID
Human	9019 ;	O95297 ;
Mouse	68481 ;	Q3TEW6 ;
Rat	360871 ;	Q6AYT8 ;

Cellular Localization

Membrane ; Single-pass type I membrane protein .

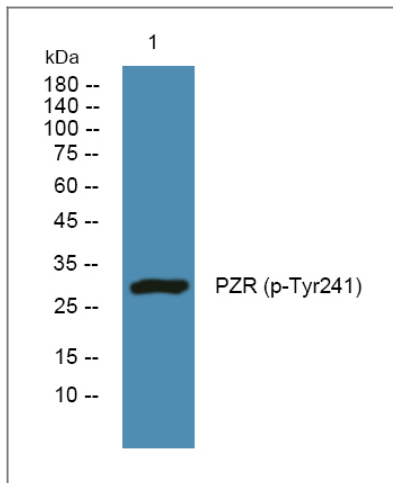
Tissue specificity

Widely expressed with highest levels in heart, placenta, kidney and pancreas. Isoform 3 is relatively abundant in hematopoietic tissues and fetal liver. Isoform 1 and isoform 3 are expressed in CD14- PB monocytes and pre-B cell progenitors. Isoform 3 appears to be the major isoform in CD34- promyelocytic and promonocytic cells. During differentiation in monocytic cells, the expression level of isoform 3 decreases and that of isoform 1 increases. Isoform 1 is prominent in stromal cells and, to a lesser extent, in umbilical vein endothelial cells and erythroid progenitors. Isoform 2 is expressed in a erythroid progenitor cell line.

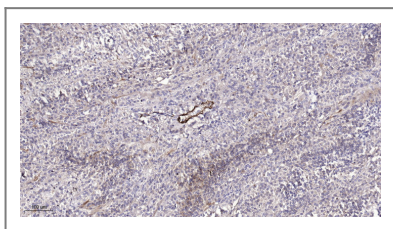
Function

Domain:Contains 2 copies of a cytoplasmic motif that is referred to as the immunoreceptor tyrosine-based inhibitor motif (ITIM). This motif is involved in modulation of cellular responses. The phosphorylated ITIM motif can bind the SH2 domain of several SH2-containing phosphatases.,Function:Cell surface receptor, which is involved in signal transduction processes. Recruits PTPN11/SHP-2 to the cell membrane and is a putative substrate of PTPN11/SHP-2. Is a major receptor for concanavalin A (ConA) and is involved in cellular signaling induced by ConA, which probably includes Src family tyrosine-protein kinases. Isoform 3 seems to have a dominant negative role; it blocks tyrosine phosphorylation of MPZL1 induced by ConA. Isoform 1, but not isoform 2 and isoform 3, may be involved in regulation of integrin-mediated cell motility.,PTM:N-glycosylated.,PTM:Phosphorylated on tyrosine residues upon stimulation with pervanadate and concanavalin A (ConA). Phosphorylation at Tyr-241 and Tyr-263 is required for interaction with PTPN11/SHP-2. Dephosphorylated by PTPN11/SHP-2 (in vitro).,similarity:Belongs to the myelin P0 protein family.,similarity:Contains 1 Ig-like V-type (immunoglobulin-like) domain.,subunit:Interacts with phosphorylated PTPN11/SHP-2.,tissue specificity:Widely expressed with highest levels in heart, placenta, kidney and pancreas. Isoform 3 is relatively abundant in hematopoietic tissues and fetal liver. Isoform 1 and isoform 3 are expressed in CD14- PB monocytes and pre-B cell progenitors. Isoform 3 appears to be the major isoform in CD34- promyelocytic and promonocytic cells. During differentiation in monocytic cells, the expression level of isoform 3 decreases and that of isoform 1 increases. Isoform 1 is prominent in stromal cells and, to a lesser extent, in umbilical vein endothelial cells and erythroid progenitors. Isoform 2 is expressed in a erythroid progenitor cell line.,

| Validation Data



Western blot analysis of lysates from SW480 cells, primary antibody was diluted at 1:1000, 4° over night



Immunohistochemical analysis of paraffin-embedded human Colon cancer. 1, Antibody was diluted at 1:200(4° overnight). 2, Tris-EDTA,pH9.0 was used for antigen retrieval. 3,Secondary antibody was diluted at 1:200(room temperature, 45min).

Contact information

Orders: order@immunoway.com
 Support: tech@immunoway.com
 Telephone: 877-594-3616 (Toll Free), 408-747-0185
 Website: <http://www.immunoway.com>
 Address: 2200 Ringwood Ave San Jose, CA 95131 USA



Please scan the QR code to access additional product information:
PZR (Phospho Tyr241) Rabbit pAb

For Research Use Only. Not for Use in Diagnostic Procedures.

[Antibody](#) | [ELISA Kits](#) | [Protein](#) | [Reagents](#)