

PSD95 (Phospho Ser295) Rabbit pAb

CatalogNo: YP1453

Key Features

Host Species

- Rabbit

Reactivity

- Human, Mouse, Rat

Applications

- WB, ELISA, IHC

MW

- 95kD (Observed)

Isotype

- IgG

Recommended Dilution Ratios

WB 1:500-2000

IHC 1:50-300

ELISA 1:2000-20000

Storage

Storage*

-15°C to -25°C/1 year (Do not lower than -25°C)

Formulation

Liquid in PBS containing 50% glycerol, 0.5% BSA and 0.02% sodium azide.

Basic Information

Clonality

Polyclonal

Immunogen Information

Immunogen

Synthesized phospho peptide around human PSD95 (Ser295)

Specificity

This antibody detects endogenous levels of Human Mouse Rat PSD95 (phospho-Ser295)

Target Information

Gene name

DLG4 PSD95

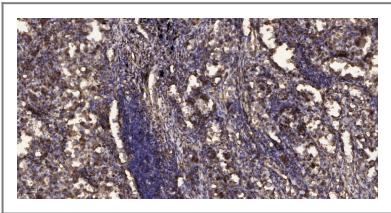
Protein Name	PSD95 (Ser295)		
	Organism	Gene ID	UniProt ID
	Human	1742;	P78352;
	Mouse	13385;	Q62108;
	Rat	29495;	P31016;

Cellular Localization Cell membrane ; Lipid-anchor ; Cytoplasmic side . Cell junction, synapse, postsynaptic density . Cell junction, synapse . Cytoplasm . Cell projection, axon . Cell projection, dendritic spine . Cell projection, dendrite . Cell junction, synapse, presynapse . High levels in postsynaptic density of neurons in the forebrain. Also in presynaptic region of inhibitory synapses formed by cerebellar basket cells on axon hillocks of Purkinje cells. Suppression of neuronal activity induces synaptic accumulation and clustering of DLG4. .

Tissue specificity Brain.

Function Domain:The L27 domain near the N-terminus of isoform 2 is required for HGS/HRS-dependent targeting to post-synaptic density.,Domain:The PDZ domain 3 mediates interaction with ADR1B.,Function:Interacts with the cytoplasmic tail of NMDA receptor subunits and shaker-type potassium channels. Required for synaptic plasticity associated with NMDA receptor signaling. Overexpression or depletion of DLG4 changes the ratio of excitatory to inhibitory synapses in hippocampal neurons. May reduce the amplitude of ACCN3 acid-evoked currents by retaining the channel intracellularly. May regulate the intracellular trafficking of ADR1B.,PTM:Palmitoylation of isoform 1 is required for targeting to postsynaptic density.,similarity:Belongs to the MAGUK family.,similarity:Contains 1 guanylate kinase-like domain.,similarity:Contains 1 SH3 domain.,similarity:Contains 2 PDZ (DHR) domains.,similarity:Contains 3 PDZ (DHR) domains.,subcellular location:High levels in postsynaptic density of neurons in the forebrain. Also in presynaptic region of inhibitory synapses formed by cerebellar basket cells on axon hillocks of Purkinje cells.,subunit:Interacts with ANKS1B and PRR7 (By similarity). Interacts through its first two PDZ domains with GRIN2A, GRIN2B, GRIN2C, GRIN2D, ACCN3, certain splice forms of GRIN1, KCND2, CXADR and SYNGAP1. Interacts through its second PDZ domain with the PDZ domain of NOS1 or the C-terminus of CAPON. May interact with HTR2A. Interacts through its guanylate kinase-like domain with DLGAP1/GKAP, DLGAP2, DLGAP3, DLGAP4, MAP1A and BEGAIN. Interacts through its third PDZ domain with CRIPT (By similarity). Interacts through its first two PDZ domains with KCNA1, KCNA2, KCNA3, KCNA4 and ERBB4. Interacts through its first PDZ domain with GRIK2, KCNA4 and CRIPT. Interacts through its third PDZ domain with NLGN1, and probably with NLGN2 and NLGN3. Interacts through its guanylate kinase-like domain with KIF13B. Isoform 2 interacts through an L27 domain with HGS/HRS and the first L27 domain of CASK. Interacts with LRFN1.,tissue specificity:Brain.,

| Validation Data



Immunohistochemical analysis of paraffin-embedded human Squamous cell carcinoma of lung. 1, Antibody was diluted at 1:200(4° overnight). 2, Tris-EDTA,pH9.0 was used for antigen retrieval. 3,Secondary antibody was diluted at 1:200(room temperature, 45min).

| Contact information

Orders: order@immunoway.com
Support: tech@immunoway.com
Telephone: 877-594-3616 (Toll Free), 408-747-0185
Website: <http://www.immunoway.com>
Address: 2200 Ringwood Ave San Jose, CA 95131 USA



Please scan the QR code
to access additional
product information:
**PSD95 (Phospho
Ser295) Rabbit pAb**

For Research Use Only. Not for Use in Diagnostic Procedures.

[Antibody](#) | [ELISA Kits](#) | [Protein](#) | [Reagents](#)