

Prdx1 (Phospho Tyr194) Rabbit pAb

CatalogNo: YP1450

Key Features

Host Species

- Rabbit

Reactivity

- Human, Mouse, Rat

Applications

- WB, ELISA, IHC

MW

- 21kD (Observed)

Isotype

- IgG

Storage

Storage* -15°C to -25°C/1 year (Do not lower than -25°C)

Formulation Liquid in PBS containing 50% glycerol, 0.5% BSA and 0.02% sodium azide.

Recommended Dilution Ratios

WB 1:500-2000

IHC 1:50-300

ELISA 1:2000-20000

Basic Information

Clonality Polyclonal

Immunogen Information

Immunogen Synthesized phospho peptide around human Prdx1 (Tyr194)

Specificity This antibody detects endogenous levels of Human Prdx1 (phospho-Tyr194)

Target Information

Gene name PRDX1 PAGA PAGB TDPX2

Protein Name Prdx1 (Tyr194) ,Peroxiredoxin-1

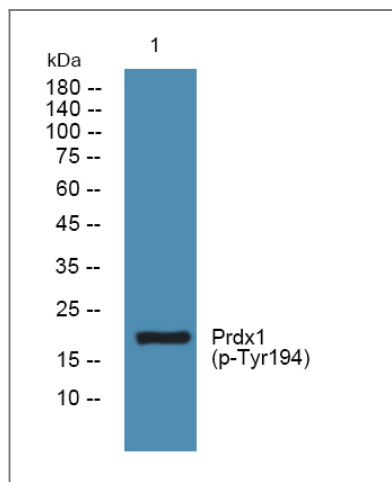
| Organism | Gene ID | UniProt ID |
|----------|--------------------------|--------------------------|
| Human | 5052 ; | Q06830 ; |
| Mouse | 18477 ; | P35700 ; |
| Rat | 117254 ; | Q63716 ; |

Cellular Localization Cytoplasm . Melanosome . Identified by mass spectrometry in melanosome fractions from stage I to stage IV.

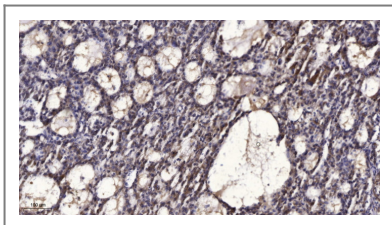
Tissue specificity Brain,Cajal-Retzius cell,Fetal brain cortex,Urinary bladder,

Function Catalytic activity:2 R'-SH + ROOH = R'-S-S-R' + H(2)O + ROH.,Function:Involved in redox regulation of the cell. Reduces peroxides with reducing equivalents provided through the thioredoxin system but not from glutaredoxin. May play an important role in eliminating peroxides generated during metabolism. Might participate in the signaling cascades of growth factors and tumor necrosis factor-alpha by regulating the intracellular concentrations of H(2)O(2).,induction:Constitutively expressed in most human cells; is induced to higher levels upon serum stimulation in untransformed and transformed cells.,miscellaneous:Inactivated upon oxidative stress by overoxidation of Cys-52 to Cys-SO(2)H and Cys-SO(3)H. Cys-SO(2)H is retroreduced to Cys-SOH after removal of H(2)O(2), while Cys-SO(3)H may be irreversibly oxidized.,miscellaneous:The active site is the redox-active Cys-52 oxidized to Cys-SOH. Cys-SOH rapidly reacts with Cys-173-SH of the other subunit to form an intermolecular disulfide with a concomitant homodimer formation. The enzyme may be subsequently regenerated by reduction of the disulfide by thioredoxin.,PTM:Phosphorylated on Thr-90 during the M-phase, which leads to a more than 80% decrease in enzymatic activity.,similarity:Belongs to the ahpC/TSA family.,similarity:Contains 1 thioredoxin domain.,subcellular location:Identified by mass spectrometry in melanosome fractions from stage I to stage IV.,subunit:Homodimer; disulfide-linked, upon oxidation (By similarity). May form heterodimers with AOP2.,

Validation Data



Western blot analysis of lysates from K562 cells, primary antibody was diluted at 1:1000, 4° over night



Immunohistochemical analysis of paraffin-embedded human liver cancer. 1, Antibody was diluted at 1:200(4° overnight). 2, Tris-EDTA,pH9.0 was used for antigen retrieval. 3,Secondary antibody was diluted at 1:200(room temperature, 45min).

| Contact information

Orders: order@immunoway.com
Support: tech@immunoway.com
Telephone: 877-594-3616 (Toll Free), 408-747-0185
Website: <http://www.immunoway.com>
Address: 2200 Ringwood Ave San Jose, CA 95131 USA



Please scan the QR code to access additional product information:

Prdx1 (Phospho Tyr194) Rabbit pAb

For Research Use Only. Not for Use in Diagnostic Procedures.

[Antibody](#) | [ELISA Kits](#) | [Protein](#) | [Reagents](#)