

# PLC $\gamma$ 1 (Phospho Ser1248) Rabbit pAb

CatalogNo: YP1445

## Key Features

### Host Species

- Rabbit

### Reactivity

- Human, Mouse

### Applications

- WB, IHC

### MW

- 150kD (Observed)

### Isotype

- IgG

## Storage

**Storage\*** -15°C to -25°C/1 year (Do not lower than -25°C)

**Formulation** Liquid in PBS containing 50% glycerol, 0.5% BSA and 0.02% sodium azide.

## Recommended Dilution Ratios

**WB 1:500-2000**

**IHC 1:50-300**

## Basic Information

**Clonality** Polyclonal

## Immunogen Information

**Immunogen** Synthesized phospho peptide around human PLC $\gamma$ 1 (Ser1248)

**Specificity** This antibody detects endogenous levels of Human Mouse PLC $\gamma$ 1 (phospho-Ser1248). The name of modified sites may be influenced by many factors, such as species (the modified site was not originally found in human samples) and the change of protein sequence (the previous protein sequence is incomplete, and the protein sequence may be prolonged with the development of protein sequencing technology). When naming, we will use the "numbers" in historical reference to keep the sites consistent with the reports. The antibody binds to the following modification sequence (lowercase letters are modification sites): EGsFE

## Target Information

**Gene name** PLCG1 PLC1

**Protein Name** PLCγ1 (Ser1248)

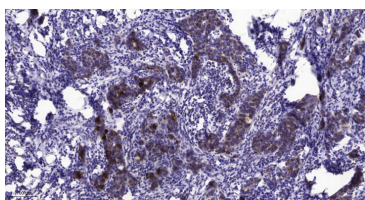
Organism	Gene ID	UniProt ID
Human	<a href="#">5335</a> ;	<a href="#">P19174</a> ;
Mouse	<a href="#">18803</a> ;	<a href="#">Q62077</a> ;
Rat	<a href="#">25738</a> ;	<a href="#">P10686</a> ;

**Cellular Localization** Cell projection, lamellipodium . Cell projection, ruffle . Rapidly redistributed to ruffles and lamellipodia structures in response to epidermal growth factor (EGF) treatment. .

**Tissue specificity** Brain,Epithelium,Testis,Vein,

**Function** Catalytic activity:1-phosphatidyl-1D-myo-inositol 4,5-bisphosphate + H(2)O = 1D-myo-inositol 1,4,5-trisphosphate + diacylglycerol.,cofactor:Calcium.,Domain:The SH3 domain mediates interaction with CLNK (By similarity). The SH3 domain also mediates interaction with RALGPS1.,Function:PLC-gamma is a major substrate for heparin-binding growth factor 1 (acidic fibroblast growth factor)-activated tyrosine kinase.,PTM:The receptor-mediated activation of PLC-gamma-1 and PLC-gamma-2 involves their phosphorylation by tyrosine kinases in response to ligation of a variety of growth factor receptors and immune system receptors.,PTM:Ubiquitinated by CBLB in activated T-cells.,similarity:Contains 1 C2 domain.,similarity:Contains 1 EF-hand domain.,similarity:Contains 1 PH domain.,similarity:Contains 1 PI-PLC X-box domain.,similarity:Contains 1 PI-PLC Y-box domain.,similarity:Contains 1 SH3 domain.,similarity:Contains 2 PH domains.,similarity:Contains 2 SH2 domains.,similarity:Contains 3 PH domains.,subunit:Interacts with AGAP2 via its SH3 domain (By similarity). Interacts with phosphorylated LAT upon TCR activation. Interacts with the Pro-rich domain of TNK1 via its SH3 domain. Associates with BLNK, VAV1, GRB2 and NCK1 in a B-cell antigen receptor-dependent fashion. Interacts with CBLB in activated T-cells; which inhibits phosphorylation. Interacts with SHB. Interacts via its SH3 domain with the Arg/Gly-rich-flanked Pro-rich domains of KHDRBS1/SAM68. This interaction is selectively regulated by arginine methylation of KHDRBS1/SAM68. Interacts with INPP5D/SHIP1 and CLNK (By similarity). Interacts with RALGPS1. Interacts (via SH3 domain) with HEV ORF3 protein.,

## Validation Data



Immunohistochemical analysis of paraffin-embedded human Breast cancer. 1, Antibody was diluted at 1:200(4° overnight). 2, Tris-EDTA,pH9.0 was used for antigen retrieval. 3,Secondary antibody was diluted at 1:200(room temperature, 45min).

## | Contact information

Orders: order@immunoway.com  
Support: tech@immunoway.com  
Telephone: 877-594-3616 (Toll Free), 408-747-0185  
Website: <http://www.immunoway.com>  
Address: 2200 Ringwood Ave San Jose, CA 95131 USA



Please scan the QR code to access additional product information:  
**PLC  $\gamma$ 1 (Phospho Ser1248) Rabbit pAb**

---

For Research Use Only. Not for Use in Diagnostic Procedures.

[Antibody](#) | [ELISA Kits](#) | [Protein](#) | [Reagents](#)