

## PKC $\alpha$ / $\beta$ II (Phospho Thr638/641) Rabbit pAb

CatalogNo: YP1441

### Key Features

#### Host Species

- Rabbit

#### Reactivity

- Human, Mouse

#### Applications

- WB, IHC

#### MW

- 76kD (Observed)

#### Isotype

- IgG

### Storage

**Storage\*** -15°C to -25°C/1 year (Do not lower than -25°C)

**Formulation** Liquid in PBS containing 50% glycerol, 0.5% BSA and 0.02% sodium azide.

### Recommended Dilution Ratios

**WB** 1:500-2000

**IHC** 1:50-300

### Basic Information

**Clonality** Polyclonal

### Immunogen Information

**Immunogen** Synthesized phospho peptide around human PKC $\alpha$  (Thr638 and 641)

**Specificity** This antibody detects endogenous levels of PKC $\alpha$ / $\beta$  II only when phosphorylated at Thr638/641. This antibody does not recognize phosphorylated at other sites.

### Target Information

**Protein Name** PKC $\alpha$ / $\beta$  II (Thr638/641)

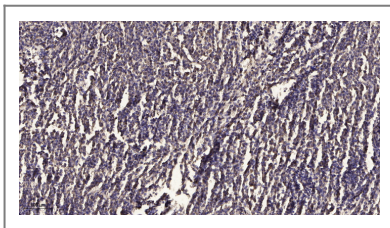
Organism	Gene ID	UniProt ID
Human	<a href="#">5578</a> ;	<a href="#">P17252</a> ;
Mouse	<a href="#">18750</a> ;	<a href="#">P20444</a> ;
Rat		<a href="#">P05696</a> ;

**Cellular Localization** Cytoplasm . Cell membrane ; Peripheral membrane protein . Mitochondrion membrane ; Peripheral membrane protein . Nucleus .

**Tissue specificity** Blood,Brain,Epithelium,Lung,Platelet,

**Function** Catalytic activity:ATP + a protein = ADP + a phosphoprotein.,cofactor:Binds 3 calcium ions per subunit. The ions are bound to the C2 domain.,Function:PKC is activated by diacylglycerol which in turn phosphorylates a range of cellular proteins. PKC also serves as the receptor for phorbol esters, a class of tumor promoters.,Function:This is a calcium-activated, phospholipid-dependent, serine- and threonine-specific enzyme. May play a role in cell motility by phosphorylating CSPG4.,similarity:Belongs to the protein kinase superfamily.,similarity:Belongs to the protein kinase superfamily. AGC Ser/Thr protein kinase family. PKC subfamily.,similarity:Contains 1 AGC-kinase C-terminal domain.,similarity:Contains 1 C2 domain.,similarity:Contains 1 protein kinase domain.,similarity:Contains 2 phorbol-ester/DAG-type zinc fingers.,subunit:Interacts with ADAP1/CENTA1, CSPG4 and PRKCABP. Binds to SDPR in the presence of phosphatidylserine.,

## Validation Data



Immunohistochemical analysis of paraffin-embedded human meningioma. 1, Antibody was diluted at 1:200(4° overnight). 2, Tris-EDTA,pH9.0 was used for antigen retrieval. 3,Secondary antibody was diluted at 1:200(room temperature, 45min).

## Contact information

Orders: [order@immunoway.com](mailto:order@immunoway.com)  
Support: [tech@immunoway.com](mailto:tech@immunoway.com)  
Telephone: 877-594-3616 (Toll Free), 408-747-0185  
Website: <http://www.immunoway.com>  
Address: 2200 Ringwood Ave San Jose, CA 95131 USA



Please scan the QR code to access additional product information:  
**PKC $\alpha$ / $\beta$  II (Phospho Thr638/641) Rabbit pAb**