

## PI3 Kinase Class III (Phospho Ser249) Rabbit pAb

CatalogNo: YP1435 Orthogonal Validated 

### Key Features

#### Host Species

- Rabbit

#### Reactivity

- Human, Mouse, Rat

#### Applications

- WB, ELISA, IHC

#### MW

- 100kD (Observed)

#### Isotype

- IgG

### Storage

**Storage\*** -15°C to -25°C/1 year (Do not lower than -25°C)**Formulation** Liquid in PBS containing 50% glycerol, 0.5% BSA and 0.02% sodium azide.

### Recommended Dilution Ratios

**WB 1:500-2000****IHC 1:50-300****ELISA 1:2000-20000**

### Basic Information

**Clonality** Polyclonal

### Immunogen Information

**Immunogen** Synthesized phospho peptide around human PI3 Kinase Class III (Ser249)**Specificity** This antibody detects endogenous levels of Human PI3 Kinase Class III (phospho-Ser249)

### Target Information

**Gene name** PIK3C3 VPS34

**Protein Name** PI 3 Kinase Class III (Ser249)

Organism	Gene ID	UniProt ID
Human	<a href="#">5289;</a>	<a href="#">Q8NEB9;</a>
Mouse	<a href="#">225326;</a>	<a href="#">Q6PF93;</a>
Rat	<a href="#">65052;</a>	<a href="#">O88763;</a>

**Cellular Localization**

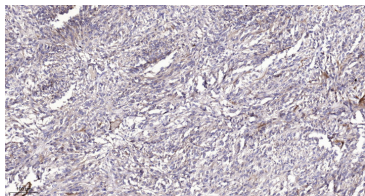
Midbody . Late endosome . Cytoplasmic vesicle, autophagosome . As component of the PI3K complex I localized to pre-autophagosome structures. As component of the PI3K complex II localized predominantly to endosomes (PubMed:14617358). Localizes also to discrete punctae along the ciliary axoneme and to the base of the ciliary axoneme (By similarity). .

**Tissue specificity** Ubiquitously expressed, with a highest expression in skeletal muscle.

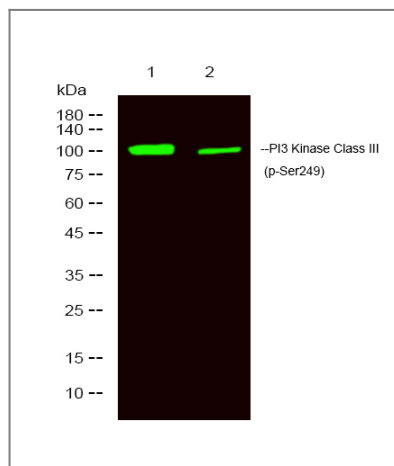
**Function**

Catalytic activity:ATP + 1-phosphatidyl-1D-myo-inositol = ADP + 1-phosphatidyl-1D-myo-inositol 3-phosphate.,cofactor:Manganese.,Function:Catalytic subunit of the PI3K complex. Involved in the transport of lysosomal enzyme precursors to lysosomes.,similarity:Belongs to the PI3/PI4-kinase family.,similarity:Contains 1 PI3K/PI4K domain.,subunit:Probably forms a complex with AMBRA1 and BECN1 (By similarity). Heterodimer. This subunit, part of a complex composed of regulatory and catalytic subunits, associates with regulatory subunit PIK3R4.,tissue specificity:Ubiquitously expressed, with a highest expression in skeletal muscle.,

## Validation Data



Immunohistochemical analysis of paraffin-embedded human Colon cancer. 1, Antibody was diluted at 1:200(4° overnight). 2, Tris-EDTA,pH9.0 was used for antigen retrieval. 3,Secondary antibody was diluted at 1:200(room temperature, 45min).



Western Blot analysis of 1 Jurkat treated with LPS, 2 Jurkat ,using primary antibody at 1:1000 dilution. Secondary antibody(catalog#:RS23920) was diluted at 1:10000

## | Contact information

Orders: order@immunoway.com  
Support: tech@immunoway.com  
Telephone: 877-594-3616 (Toll Free), 408-747-0185  
Website: <http://www.immunoway.com>  
Address: 2200 Ringwood Ave San Jose, CA 95131 USA



Please scan the QR code to access additional product information:  
**PI3 Kinase Class III  
(Phospho Ser249)  
Rabbit pAb**

---

For Research Use Only. Not for Use in Diagnostic Procedures.

[Antibody](#) | [ELISA Kits](#) | [Protein](#) | [Reagents](#)