

MOB1A/B (Phospho Thr12) Rabbit pAb

CatalogNo: YP1405

Key Features

Host Species

- Rabbit

Reactivity

- Human, Mouse, Rat

Applications

- WB, ELISA, IHC

MW

- 23kD (Observed)

Isotype

- IgG

Storage

Storage* -15°C to -25°C/1 year (Do not lower than -25°C)

Formulation Liquid in PBS containing 50% glycerol, 0.5% BSA and 0.02% sodium azide.

Recommended Dilution Ratios

WB 1:500-2000

IHC 1:50-300

ELISA 1:2000-20000

Basic Information

Clonality Polyclonal

Immunogen Information

Immunogen Synthesized phospho peptide around human MOB1 (Thr12)

Specificity This antibody detects endogenous levels of Human Mouse Rat MOB1 (phospho-Thr12)

Target Information

Protein Name

MOB1 (Thr12)

Organism	Gene ID	UniProt ID
Human	55233 ;	Q9H8S9 ; Q7L9L4 ;
Mouse	232157 ;	Q921Y0 ; Q8BPB0 ;
Rat	297387 ;	Q3T1J9 ;

Cellular Localization

cytosol,extracellular exosome,

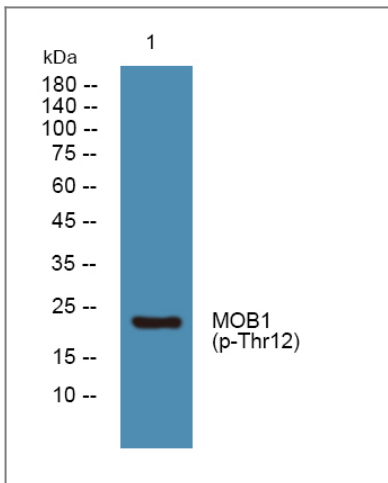
Tissue specificity

Adrenal gland, bone marrow, brain, placenta, prostate, salivary gland, skeletal muscle, testis, thymus, thyroid gland, heart, spinal cord, fetal brain and fetal liver.

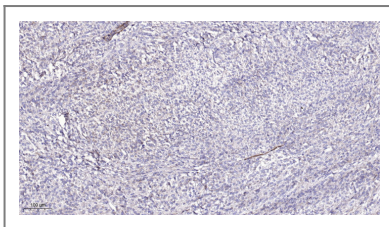
Function

Function:Stimulates the kinase activity of STK38 and STK38L.,PTM:Phosphorylated.,similarity:Belongs to the MOB1/phocein family.,subunit:Bounds STK38 and STK38L.,

Validation Data



Western blot analysis of lysates from U2OS cells, primary antibody was diluted at 1:1000, 4° overnight



Immunohistochemical analysis of paraffin-embedded human Colon cancer. 1, Antibody was diluted at 1:200(4° overnight). 2, Tris-EDTA,pH9.0 was used for antigen retrieval. 3,Secondary antibody was diluted at 1:200(room temperature, 45min).

Contact information

Orders: order@immunoway.com
Support: tech@immunoway.com
Telephone: 877-594-3616 (Toll Free), 408-747-0185
Website: http://www.immunoway.com
Address: 2200 Ringwood Ave San Jose, CA 95131 USA



Please scan the QR code to access additional product information:
MOB1A/B (Phospho Thr12) Rabbit pAb

For Research Use Only. Not for Use in Diagnostic Procedures.

[Antibody](#) | [ELISA Kits](#) | [Protein](#) | [Reagents](#)