

MFF (Phospho Ser146) Rabbit pAb

CatalogNo: YP1403

| Key Features

Host Species

- Rabbit

Reactivity

- Human, Mouse, Rat

Applications

- WB, ELISA, IHC

MW

- 37kD (Observed)

Isotype

- IgG

| Recommended Dilution Ratios

WB 1:500-2000

IHC 1:50-300

ELISA 1:2000-20000

| Storage

Storage* -15°C to -25°C/1 year (Do not lower than -25°C)

Formulation Liquid in PBS containing 50% glycerol, 0.5% BSA and 0.02% sodium azide.

| Basic Information

Clonality Polyclonal

| Immunogen Information

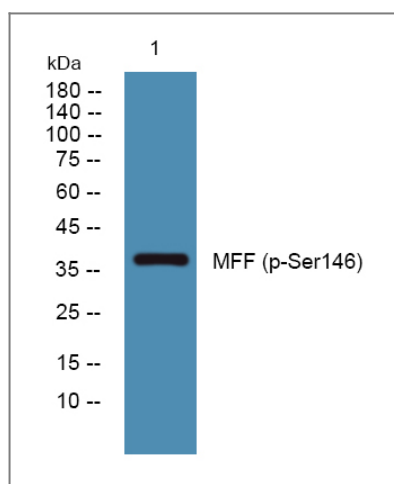
Immunogen Synthesized phospho peptide around human MFF (Ser146)

Specificity This antibody detects endogenous levels of Human Mouse Rat MFF (phospho-Ser146)

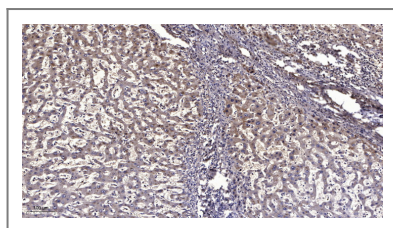
| Target Information

Protein Name	MFF (Ser146)		
	Organism	Gene ID	UniProt ID
	Human	56947;	Q9GZY8;
	Mouse	75734;	Q6PCP5;
	Rat	100911613;	Q4KM98;
Cellular Localization	Mitochondrion outer membrane ; Single-pass type IV membrane protein . Peroxisome . Cytoplasmic vesicle, secretory vesicle, synaptic vesicle .		
Tissue specificity	Highly expressed in heart, kidney, liver, brain, muscle, and stomach.		

Validation Data



Western blot analysis of lysates from U2OS cells, primary antibody was diluted at 1:1000, 4° over night



Immunohistochemical analysis of paraffin-embedded human liver cancer. 1, Antibody was diluted at 1:200(4° overnight). 2, Tris-EDTA,pH9.0 was used for antigen retrieval. 3,Secondary antibody was diluted at 1:200(room temperature, 45min).

Contact information

Orders: order@immunoway.com
 Support: tech@immunoway.com
 Telephone: 877-594-3616 (Toll Free), 408-747-0185
 Website: <http://www.immunoway.com>
 Address: 2200 Ringwood Ave San Jose, CA 95131 USA



Please scan the QR code to access additional product information:
MFF (Phospho Ser146) Rabbit pAb

