

MERIT40 (Phospho Ser29) Rabbit pAb

CatalogNo: YP1401

Key Features

Host Species

- Rabbit

Reactivity

- Human, Mouse, Rat

Applications

- WB, IHC

MW

- 36kD (Observed)

Isotype

- IgG

Storage

Storage* -15°C to -25°C/1 year (Do not lower than -25°C)

Formulation Liquid in PBS containing 50% glycerol, 0.5% BSA and 0.02% sodium azide.

Recommended Dilution Ratios

WB 1:500-2000

IHC 1:50-300

Basic Information

Clonality Polyclonal

Immunogen Information

Immunogen Synthesized phospho peptide around human MERIT40 (Ser29)

Specificity This antibody detects endogenous levels of Human MERIT40 (phospho-Ser29)

Target Information

Gene name BABAM1 C19orf62 MERIT40 NBA1 HSPC142

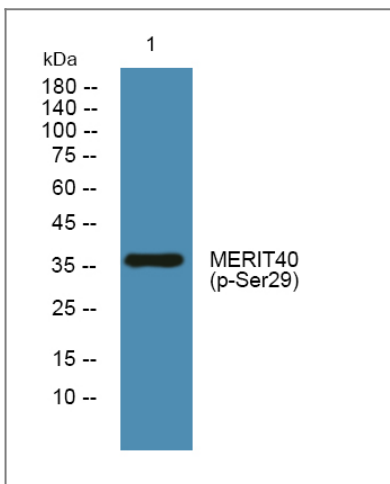
Protein Name BRISC and BRCA1-A complex member 1

Organism	Gene ID	UniProt ID
Human	29086 ;	Q9NWX8 ;
Mouse	68251 ;	Q3UI43 ;
Rat	290631 ;	Q5XIJ6 ;

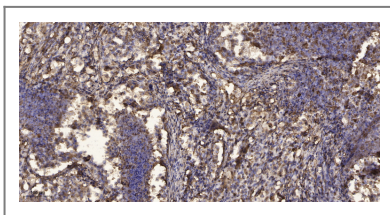
Cellular Localization

Cytoplasm . Nucleus . Localizes at sites of DNA damage at double-strand breaks (DSBs) . .

Validation Data



Western blot analysis of lysates from SH-SY5Y cells, primary antibody was diluted at 1:1000, 4° over night



Immunohistochemical analysis of paraffin-embedded human Squamous cell carcinoma of lung. 1, Antibody was diluted at 1:200(4° overnight). 2, Tris-EDTA, pH9.0 was used for antigen retrieval. 3, Secondary antibody was diluted at 1:200(room temperature, 45min).

Contact information

Orders: order@immunoway.com
Support: tech@immunoway.com
Telephone: 877-594-3616 (Toll Free), 408-747-0185
Website: <http://www.immunoway.com>
Address: 2200 Ringwood Ave San Jose, CA 95131 USA



Please scan the QR code to access additional product information:
MERIT40 (Phospho Ser29) Rabbit pAb

