

# MCM3 (Phospho Ser112) Rabbit pAb

CatalogNo: YP1398

## Key Features

### Host Species

- Rabbit

### Reactivity

- Human, Mouse, Rat

### Applications

- WB, ELISA, IHC

### MW

- 89kD (Observed)

### Isotype

- IgG

## Storage

**Storage\*** -15°C to -25°C/1 year (Do not lower than -25°C)

**Formulation** Liquid in PBS containing 50% glycerol, 0.5% BSA and 0.02% sodium azide.

## Recommended Dilution Ratios

**WB 1:500-2000**

**IHC 1:50-300**

**ELISA 1:2000-20000**

## Basic Information

**Clonality** Polyclonal

## Immunogen Information

**Immunogen** Synthesized phospho peptide around human MCM3 (Ser112)

**Specificity** This antibody detects endogenous levels of Human MCM3 (phospho-Ser112)

## Target Information

**Gene name** MCM3

**Protein Name** MCM3 (Ser112)

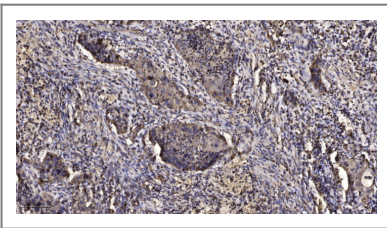
Organism	Gene ID	UniProt ID
Human	<a href="#">4172;</a>	<a href="#">P25205;</a>
Mouse	<a href="#">17215;</a>	<a href="#">P25206;</a>

**Cellular Localization** Nucleus . Chromosome . Associated with chromatin before the formation of nuclei and detaches from it as DNA replication progresses. .

**Tissue specificity** Cervix,Coronary artery,Epithelium,Lymph,Osteosarcoma,Pancre

**Function** Function:Acts as a factor that allows the DNA to undergo a single round of replication per cell cycle. Required for DNA replication and cell proliferation.,miscellaneous:Associated with the replication-specific DNA polymerase alpha.,PTM:Phosphorylated upon DNA damage, probably by ATM or ATR.,similarity:Belongs to the MCM family.,similarity:Contains 1 MCM domain.,

## | Validation Data



Immunohistochemical analysis of paraffin-embedded human Squamous cell carcinoma of lung. 1, Antibody was diluted at 1:200(4° overnight). 2, Tris-EDTA,pH9.0 was used for antigen retrieval. 3,Secondary antibody was diluted at 1:200(room temperature, 45min).

## | Contact information

Orders: [order@immunoway.com](mailto:order@immunoway.com)  
Support: [tech@immunoway.com](mailto:tech@immunoway.com)  
Telephone: 877-594-3616 (Toll Free), 408-747-0185  
Website: <http://www.immunoway.com>  
Address: 2200 Ringwood Ave San Jose, CA 95131 USA



Please scan the QR code to access additional product information:  
**MCM3 (Phospho Ser112) Rabbit pAb**

For Research Use Only. Not for Use in Diagnostic Procedures.

[Antibody](#) | [ELISA Kits](#) | [Protein](#) | [Reagents](#)