

MARCKS (Phospho Ser159/163) Rabbit pAb

CatalogNo: YP1392

Key Features

Host Species

- Rabbit

Reactivity

- Human, Mouse, Rat

Applications

- WB

MW

- 32kD (Observed)

Isotype

- IgG

Storage

Storage* -15°C to -25°C/1 year (Do not lower than -25°C)

Formulation Liquid in PBS containing 50% glycerol, 0.5% BSA and 0.02% sodium azide.

Recommended Dilution Ratios

WB 1:1000-2000

Basic Information

Clonality Polyclonal

Immunogen Information

Immunogen Synthesized phospho peptide around human MARCKS (Ser159 and 163)

Specificity This antibody detects endogenous levels of MARCKS only when phosphorylated at Ser159 or Ser163, and dually phosphorylated at two sites.

Target Information

Gene name MARCKS MACS PRKCSL

Protein Name MARCKS (Ser159/163)

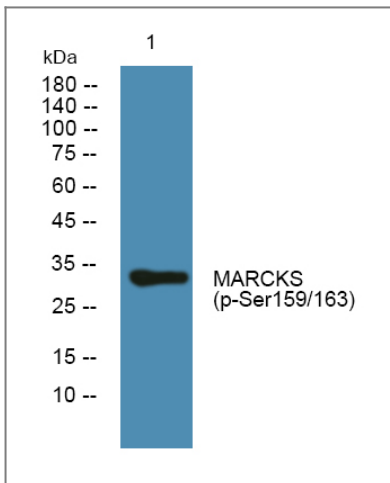
Organism	Gene ID	UniProt ID
Human	4082;	P29966;
Mouse	17118;	P26645;
Rat		P30009;

Cellular Localization Cytoplasm, cytoskeleton . Membrane ; Lipid-anchor .

Tissue specificity Blood,Brain,Epithelium,Muscle,Skin,

Function Function:MARCKS is the most prominent cellular substrate for protein kinase C. This protein binds calmodulin, actin, and synapsin. MARCKS is a filamentous (F) actin cross-linking protein.,PTM:Phosphorylation by PKC displaces MARCKS from the membrane. It also inhibits the F-actin cross-linking activity.,similarity:Belongs to the MARCKS family.,

Validation Data



Western blot analysis of lysates from DU145 cells, primary antibody was diluted at 1:1000, 4°over night

Contact information

Orders: order@immunoway.com
Support: tech@immunoway.com
Telephone: 877-594-3616 (Toll Free), 408-747-0185
Website: <http://www.immunoway.com>
Address: 2200 Ringwood Ave San Jose, CA 95131 USA



Please scan the QR code to access additional product information:
MARCKS (Phospho Ser159/163) Rabbit pAb

