

## LDHA (Phospho Tyr10) Rabbit pAb

CatalogNo: YP1385 Orthogonal Validated 

### Key Features

#### Host Species

- Rabbit

#### Reactivity

- Human

#### Applications

- WB,ELISA,IHC

#### MW

- 36kD (Observed)

#### Isotype

- IgG

### Storage

**Storage\*** -15°C to -25°C/1 year(Do not lower than -25°C)

**Formulation** Liquid in PBS containing 50% glycerol, 0.5% BSA and 0.02% sodium azide.

### Recommended Dilution Ratios

**WB 1:500-2000**

**IHC 1:50-300**

**ELISA 1:2000-20000**

### Basic Information

**Clonality** Polyclonal

### Immunogen Information

**Immunogen** Synthesized phospho peptide around human LDHA (Tyr10)

**Specificity** This antibody detects endogenous levels of Human Mouse Rat LDHA (phospho-Tyr10)

### Target Information

**Gene name** LDHA PIG19

**Protein Name**

LDHA (Tyr10)

Organism	Gene ID	UniProt ID
Human	<a href="#">3939</a> ;	<a href="#">P00338</a> ;
Mouse	<a href="#">16828</a> ;	<a href="#">P06151</a> ;
Rat	<a href="#">24533</a> ;	<a href="#">P04642</a> ;

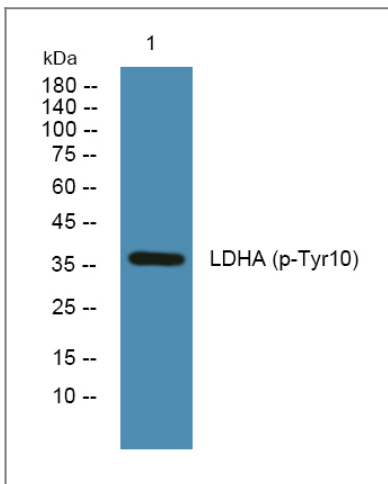
**Cellular Localization**

Cytoplasm.

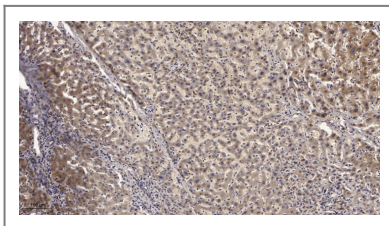
**Tissue specificity** Predominantly expressed in anaerobic tissues such as skeletal muscle and liver.**Function**

Catalytic activity:(S)-lactate + NAD(+) = pyruvate + NADH.,Caution:The sequence shown here is derived from an Ensembl automatic analysis pipeline and should be considered as preliminary data.,Disease:Defects in LDHA are a cause of exertional myoglobinuria.,online information:Lactate dehydrogenase entry,pathway:Fermentation; pyruvate fermentation to lactate; (S)-lactate from pyruvate: step 1/1.,similarity:Belongs to the LDH/MDH superfamily.,similarity:Belongs to the LDH/MDH superfamily. LDH family.,subunit:Homotetramer.,

## Validation Data



Western blot analysis of lysates from SH-SY5Y cells, primary antibody was diluted at 1:1000, 4° over night



Immunohistochemical analysis of paraffin-embedded human liver cancer. 1, Antibody was diluted at 1:200(4° overnight). 2, Tris-EDTA,pH9.0 was used for antigen retrieval. 3,Secondary antibody was diluted at 1:200(room temperature, 45min).

## Contact information

Orders: order@immunoway.com  
Support: tech@immunoway.com  
Telephone: 877-594-3616 (Toll Free), 408-747-0185  
Website: http://www.immunoway.com  
Address: 2200 Ringwood Ave San Jose, CA 95131 USA



Please scan the QR code to access additional product information:  
**LDHA (Phospho Tyr10) Rabbit pAb**

---

For Research Use Only. Not for Use in Diagnostic Procedures.

[Antibody](#) | [ELISA Kits](#) | [Protein](#) | [Reagents](#)