

JAK1(Phospho Tyr1034/1035) Rabbit pAb

CatalogNo: YP1373

Key Features

Host Species

- Rabbit

Reactivity

- Human, Mouse, Rat

Applications

- WB, IHC

MW

- 132kD (Observed)

Isotype

- IgG

Recommended Dilution Ratios

WB 1:200-1000

IHC 1:50-300

Storage

Storage* -15°C to -25°C/1 year (Do not lower than -25°C)

Formulation Liquid in PBS containing 50% glycerol, 0.5% BSA and 0.02% sodium azide.

Basic Information

Clonality Polyclonal

Immunogen Information

Immunogen Synthesized phospho peptide around human JAK1(Tyr1034 and 1035)

Specificity This antibody detects endogenous levels of JAK1 only when phosphorylated at Tyr1034 or Tyr1035 and dually phosphorylated at two sites

Target Information

Gene name JAK1 JAK1A JAK1B

Protein Name JAK1(Tyr1034/1035)

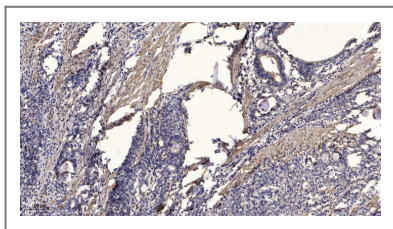
Organism	Gene ID	UniProt ID
Human	3716;	P23458;
Mouse		P52332;

Cellular Localization Endomembrane system; Peripheral membrane protein. Wholly intracellular, possibly membrane associated.

Tissue specificity Expressed at higher levels in primary colon tumors than in normal colon tissue. The expression level in metastatic colon tumors is comparable to the expression level in normal colon tissue.

Function Catalytic activity:ATP + a [protein]-L-tyrosine = ADP + a [protein]-L-tyrosine phosphate.,Domain:Possesses two phosphotransferase domains. The second one probably contains the catalytic domain (By similarity), while the presence of slight differences suggest a different role for domain 1.,Domain:The FERM domain mediates interaction with JAKMIP1.,Function:Tyrosine kinase of the non-receptor type, involved in the IFN-alpha/beta/gamma signal pathway. Kinase partner for the interleukin (IL)-2 receptor.,sequence Caution:Translation N-terminally extended.,similarity:Belongs to the protein kinase superfamily. Tyr protein kinase family. JAK subfamily.,similarity:Contains 1 FERM domain.,similarity:Contains 1 protein kinase domain.,similarity:Contains 1 SH2 domain.,subcellular location:Wholly intracellular, possibly membrane associated.,subunit:Interacts with IL31RA, JAKMIP1 and SHB.,tissue specificity:Expressed at higher levels in primary colon tumors than in normal colon tissue. The expression level in metastatic colon tumors is comparable to the expression level in normal colon tissue.,

Validation Data



Immunohistochemical analysis of paraffin-embedded human Gastric adenocarcinoma. 1, Antibody was diluted at 1:200(4° overnight). 2, Tris-EDTA,pH9.0 was used for antigen retrieval. 3,Secondary antibody was diluted at 1:200(room temperature, 45min).

Contact information

Orders: order@immunoway.com
Support: tech@immunoway.com
Telephone: 877-594-3616 (Toll Free), 408-747-0185
Website: <http://www.immunoway.com>
Address: 2200 Ringwood Ave San Jose, CA 95131 USA



Please scan the QR code to access additional product information:
JAK1(Phospho Tyr1034/1035)
Rabbit pAb

