

## FRA1 (Phospho Ser265) Rabbit pAb

CatalogNo: YP1344

### Key Features

#### Host Species

- Rabbit

#### Reactivity

- Human, Mouse, Rat

#### Applications

- WB

#### MW

- 43kD (Observed)

#### Isotype

- IgG

### Storage

**Storage\*** -15°C to -25°C/1 year (Do not lower than -25°C)

**Formulation** Liquid in PBS containing 50% glycerol, 0.5% BSA and 0.02% sodium azide.

### Recommended Dilution Ratios

**WB 1:1000-2000**

### Basic Information

**Clonality** Polyclonal

### Immunogen Information

**Immunogen** Synthesized phospho peptide around human FRA1 (Ser265)

**Specificity** This antibody detects endogenous levels of Human Mouse Rat FRA1 (phospho-Ser265)

### Target Information

**Gene name** FOSL1 FRA1

**Protein Name** FRA1 (Ser265)

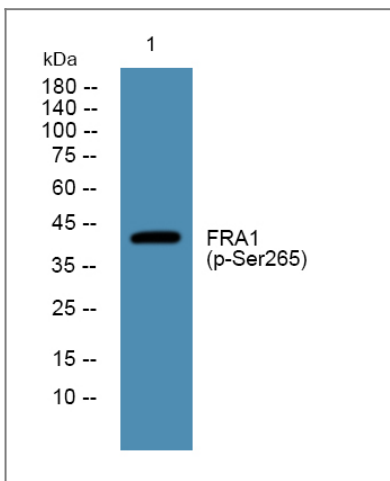
Organism	Gene ID	UniProt ID
Human	<a href="#">8061</a> ;	<a href="#">P15407</a> ;
Mouse	<a href="#">14283</a> ;	<a href="#">P48755</a> ;
Rat	<a href="#">25445</a> ;	<a href="#">P10158</a> ;

**Cellular Localization** Nucleus .

**Tissue specificity** Blood,Endothelial cell,Kidney,Skin,

**Function** similarity:Belongs to the bZIP family.,similarity:Belongs to the bZIP family. Fos subfamily.,similarity:Contains 1 bZIP domain.,subunit:Heterodimer.,

## Validation Data



Western blot analysis of lysates from DU145 cells, primary antibody was diluted at 1:1000, 4°over night

## Contact information

Orders: [order@immunoway.com](mailto:order@immunoway.com)  
Support: [tech@immunoway.com](mailto:tech@immunoway.com)  
Telephone: 877-594-3616 (Toll Free), 408-747-0185  
Website: <http://www.immunoway.com>  
Address: 2200 Ringwood Ave San Jose, CA 95131 USA



Please scan the QR code to access additional product information:  
**FRA1 (Phospho Ser265) Rabbit pAb**