

FOXM1 (Phospho Thr600) Rabbit pAb

CatalogNo: YP1337 Orthogonal Validated 

Key Features

Host Species

- Rabbit

Reactivity

- Human, Mouse, Rat

Applications

- WB

MW

- 83kD (Observed)

Isotype

- IgG

Storage

Storage* -15°C to -25°C/1 year (Do not lower than -25°C)

Formulation Liquid in PBS containing 50% glycerol, 0.5% BSA and 0.02% sodium azide.

Recommended Dilution Ratios

WB 1:1000-2000

Basic Information

Clonality Polyclonal

Immunogen Information

Immunogen Synthesized phospho peptide around human FoxM1 (Thr600)

Specificity This antibody detects endogenous levels of Human FoxM1 (phospho-Thr600)

Target Information

Gene name FOXM1 FKHL16 HFH11 MPP2 WIN

Protein Name Forkhead box protein M1 (Thr600)

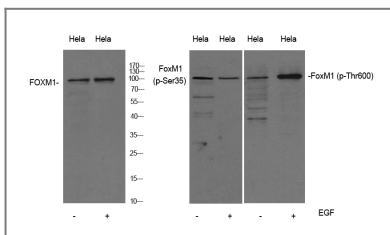
Organism	Gene ID	UniProt ID
Human	2305;	Q08050;
Mouse		O08696;
Rat		P97691;

Cellular Localization Nucleus.

Tissue specificity Expressed in thymus, testis, small intestine, colon followed by ovary. Appears to be expressed only in adult organs containing proliferating/cycling cells or in response to growth factors. Also expressed in epithelial cell lines derived from tumors. Not expressed in resting cells. Isoform 2 is highly expressed in testis.

Function Alternative products:Isoform 1 and isoform 2 appear to be the only activators of gene transcription. Isoform 3, found in rat, does not seem to exist in human,developmental stage:Embryonic expression pattern: liver, lung, intestine, kidney, urinary tract; adult expression pattern: intestine, colon, testis and thymus.,Domain:Within the protein there is a domain which acts as a transcriptional activator. Insertion of a splicing sequence within it inactivates this transcriptional activity, as it is the case for isoform 4.,Function:Transcriptional activatory factor. May play a role in the control of cell proliferation.,induction:Induced during liver regeneration and oxidative stress.,PTM:Phosphorylated in M (mitotic) phase.,similarity:Contains 1 fork-head DNA-binding domain.,tissue specificity:Expressed in thymus, testis, small intestine, colon followed by ovary. Appears to be expressed only in adult organs containing proliferating/cycling cells or in response to growth factors. Also expressed in epithelial cell lines derived from tumors. Not expressed in resting cells.,

Validation Data



Western Blot analysis of mouse and rat brain lysis treated or untreated by EGF 20ng/ml 30'. Primary Antibody was diluted at 1:1000. Secondary antibody(catalog#:RS23920 was diluted at 1:10000

Contact information

Orders: order@immunoway.com
Support: tech@immunoway.com
Telephone: 877-594-3616 (Toll Free), 408-747-0185
Website: <http://www.immunoway.com>
Address: 2200 Ringwood Ave San Jose, CA 95131 USA



Please scan the QR code to access additional product information:
FOXM1 (Phospho Thr600) Rabbit pAb

